



ECONOMY IN BRIEF TELANGANA STATE 2016

**DIRECTORATE OF ECONOMICS AND STATISTICS
GOVERNMENT OF TELANGANA
HYDERABAD**

PREFACE

Statistics is the pivotal component for drawing inferences, initiating policy formulations and also for research purposes. In this endeavor, considering the importance of the statistics, this Directorate of Economics and Statistics, Government of Telangana has made an attempt to bringing out a publication titled **“Economy in Brief – Telangana State, 2016”**, containing important statistics on important economic parameters, including certain key demographic and other characteristics of the State.

The contents of this publication includes economic indicators such as economic profile, comparative statistics of districts and States among other State features in a snap shot for the use of Government Departments and also various segments of people at large.

The efforts put in by the officials in bringing out this publication are highly appreciable.

Date: 29-06-2016
Hyderabad

V. Subramanyam
Director

INDEX

Sl. No.	Item	Page Nos.
1	Key Characteristics	1
2	Demography	
a	Population	2
b	Literacy	3
c	Scheduled Castes Population	4
d	Scheduled Tribes Population	5
e	Child Population	6
f	Workers Population	7
g	Age Group wise Population	8
3	State Economy	
a	Gross State Domestic Product at Current Prices	9 - 10
b	Gross State Domestic Product at Constant Prices	11 - 12
c	Growth of Gross State Domestic Product at Constant Prices	13 - 14
4	State Budget - Budget Estimates, 2015-16	15

INDEX

Sl. No.	Item	Page Nos.
5	Agriculture and Allied Activities	
a	Rainfall	16
b	Land Utilization	17
c	Area, Yield & Production of important Crops	18 - 19
d	Area, Yield and Production of important Fruits, Vegetables and Flower Crops	20
e	Source wise Gross Area Irrigated	21
f	Census of Land Holdings	21 - 22
6	Forests	23
7	Veterinary Services	
a	Veterinary Extension Services	24
b	Livestock Census	25
c	Livestock Production	25
d	Fish and Prawn Production	25

INDEX

Sl. No.	Item	Page Nos.
8	Mining - Production of Principal Minerals	26 - 27
9	Industries and Labour	
a	Annual Survey of Industries	28
b	Annual Average Consumer Price Index Numbers for Industrial Workers	29
c	Company Wise LPG Connections	29
d	Labour and Employment	30
e	Employment in shops and commercial establishments	30
10	Energy - Electricity Generated and Consumption	31 - 32
11	Roads, Transport and Communications	
a	Transport	33
b	Road Network	34
c	Communications	34
d	Scheduled Commercial Banks	35

INDEX

Sl. No.	Item	Page Nos.
12	Education	
a	Schools Network	36
b	Working of Teachers and Teacher-Student Ratio	37
c	Management wise Schools	38
d	Gross Enrolment Ratio and Dropout Ratio	38
e	Special Schools	39
f	Government Hostels and Ashram Schools	39
g	Educational Institutions	40
13	Medical Services	
a	Allopathic Hospitals	41
b	Hospitals under AYUSH	41
c	Health Indices	42
d	Rural Water Supply	42
14	Social Services	
a	Public Distribution System	43
b	Allotment of Rice and Sugar	43
c	Houses completed under Weaker Section Housing Programme	44
d	Aasara Pensions	44
e	House sites Distributed to Weaker Sections	44

INDEX

Sl. No.	Item	Page Nos.
15	Prices - Annual Average Retail Prices of certain essential commodities	45 - 47
16	Self Help Groups	48
17	Women and Child Welfare	48
18	Tourism	48
19	Comparative Statistics of Districts	
a	Demographic Characteristics of Districts	51
b	Gross District Domestic Product and Per Capita Income (PCI) at Current Prices	52
c	Sixth Economic Census	
i	Working of Enterprises	53
ii	Persons Employed	54
d	Pooled Estimates of MPCE (MMRP)	55
e	Human Development Index	56
20	Comparative Statistics of Major States	
a	Demographic Characteristics of States	59
b	Literacy Rate	60

INDEX

Sl. No.	Item	Page Nos.
c	Gross State Domestic Product	
i	GSDP and Per Capita Income at Current Prices, 2014-15	61
ii	GSDP and Per Capita Income (PCI) at Constant Prices, 2014-15	62
iii	Growth of GSDP at Current and Constant Prices, 2014-15	63
iv	GSDP and Per Capita Income (PCI) at Current Prices, 2015-16	64
v	GSDP and Per Capita Income (PCI) at Constant Prices, 2015-16	65
d	Livestock Census	66 - 67
e	Sixth Economic Census	68
f	Scheduled Commercial Bank Offices	69
g	Annual Survey of Industries	70
h	Human Development Index	71

1. Key Characteristics

Sl. No.	Item	Unit	State	All India
1	Geographical Area	Sq. Kms.	1,12,077	32,87,469
2	Districts	Nos.	10	640
3	Revenue Divisions	Nos.	42	-
4	Mandals/ Tahsils	Nos.	459	5,924
5	Revenue Villages	Nos.	10,434	6,40,930
a	Inhabited	Nos.	9,834	-
b	Un-Inhabited	Nos.	600	-
6	Towns	Nos.	158	7,933
a	Statutory Towns	Nos.	116	4,041
b	Census Towns	Nos.	42	3,892
7	Zilla Praja Parishads	Nos.	9	-
8	Mandal Praja Parishads	Nos.	438	-
9	Urban Local Bodies	Nos.	68	-
a	Municipal Corpn.	Nos.	6	-
b	Municipalities	Nos.	37	-
c	Nagar Panchayats	Nos.	25	-
10	Gram Panchayats	Nos.	8,695	-

2. Demography

a. Population, 2011 Census

Sl. No.	Item	Unit	State	All India
1	Area	000 Sq.ms.	112.08	3,287.47
2	Population	Lakhs	350.04	12,108.55
a	Males	Lakhs	176.12	6,232.70
b	Females	Lakhs	173.92	5,875.85
3	Decadal Growth Rate	Rate	13.58	17.70
4	Density of Population	Sq. Km.	312	382
5	Sex Ratio	Rate	988	943
6	Rural Population	Lakhs	213.95	8,337.49
a	Males	Lakhs	107.05	4,277.81
b	Females	Ratio	106.90	4,059.68
c	Sex Ratio	Rate	999	949
7	Urban Population	Lakhs	136.09	3,771.06
a	Males	Lakhs	69.07	1,954.89
b	Females	Lakhs	67.02	1,816.17
c	Sex Ratio	Ratio	970	929
8	No. of Households	Lakhs	83.04	2,495.02
a	Rural	Lakhs	51.69	1,686.13
b	Urban	Lakhs	31.35	808.89
c	Average HH Size	Nos.	4	5

b. Literacy, 2011 Census

Sl. No.	Item	Unit	State	All India
1	Literates	Lakhs	206.97	7,636.39
a	Males	Lakhs	117.02	4,347.64
b	Females	Lakhs	89.95	3,288.75
c	Rural	Lakhs	109.02	4,827.93
d	Urban	Lakhs	97.95	2,808.45
g	Highest - RR	Lakhs	35.38	UP - 1,143.98
h	Lowest - Nizamabad	Lakhs	13.90	Sikkim. - 4.45
2	Literacy rate	Rate	66.54	72.98
a	Males	Rate	75.04	80.88
b	Females	Rate	57.99	64.63
c	Rural	Rate	57.30	67.77
d	Urban	Rate	81.09	84.11
g	Highest- Hyderabad	Rate	83.25	Kerala - 94.00
h	Lowest - MBR	Rate	55.04	Bihar - 61.80

c. Scheduled Castes Population, 2011 Census

Sl. No.	Item	Unit	State	All India
1	Total	Lakhs	54.09	2013.78
a	Males	Lakhs	26.93	1035.35
b	Females	Lakhs	27.16	978.43
c	Rural	Lakhs	40.72	1,538.51
d	Urban	Lakhs	13.37	475.27
e	Sex Ratio	Ratio	1,008	945
f	Highest Pop.- KRM	Lakhs	7.10	UP - 4,13,576
g	Lowest Pop.- HYD	Lakhs	2.48	Mizorm- 8.01
2	Literates	Lakhs	28.53	1,137.60
a	Males	Lakhs	16.36	664.77
b	Females	Lakhs	12.18	472.83
c	Highest Lit.- KRM	Lakhs	3.82	UP - 209.48
d	Lowest Lit. - HYD	Lakhs	1.70	Mizorm- 0.01
3	Literacy Rate	Rate	58.90	66.07
a	Males	Rate	68.04	75.17
b	Females	Rate	49.90	56.46
c	Highest Rate - HYD	Rate	77.28	Mizrm- 92.43
d	Lowest Rate - MBR	Rate	47.72	Bihar- 48.65

d. Scheduled Tribes Population, 2011 Census

Sl. No.	Item	Unit	State	All India
1	Total	Lakhs	31.78	1,045.46
a	Males	Lakhs	16.08	525.47
b	Females	Lakhs	15.70	519.99
c	Rural	Lakhs	28.30	940.84
d	Urban	Lakhs	3.48	104.62
e	Sex Ratio	Ratio	977	990
f	Highest Pop.- KMM	Lakhs	6.57	MP - 153.17
g	Lowest Pop. - HYD	Lakhs	0.49	Goa - 1.49
2	literate	Lakhs	14.13	517.65
a	Males	Lakhs	8.52	301.41
b	Females	Lakhs	5.60	216.25
c	Highest Lit. - KMM	Lakhs	3.57	M.P 63.14
d	Lowest Lit. - HYD	Lakhs	0.30	Goa - 0.10
3	Literacy Rate	Rate	49.51	58.95
a	Males	Rate	59.49	68.51
b	Females	Rate	39.44	49.36
c	Highest Rate - HYD	Rate	69.34	Mizo - 93.59
d	Lowest Rate - MBR	Rate	42.29	AP - 49.21

e. Child Population (0-6 Years), 2011 Census

Sl. No.	Item	Unit	State	All India
1	Total Child Population	Lakhs	38.99	1,645.15
a	Males	Lakhs	20.18	857.52
b	Females	Lakhs	18.81	787.63
c	Rural	Lakhs	23.69	1,213.23
d	Urban	Lakhs	15.30	431.92
e	Sex Ratio	Ratio	932	918
2	Total SC Child Populn.	Lakhs	5.88	292.01
a	Males	Lakhs	3.01	151.04
b	Females	Lakhs	2.87	140.97
c	Rural	Lakhs	4.44	233.44
d	Urban	Lakhs	1.44	58.57
3	Total ST Child Populn.	Lakhs	4.34	167.39
a	Males	Lakhs	2.28	85.54
b	Females	Lakhs	2.06	81.85
c	Rural	Lakhs	3.90	153.99
d	Urban	Lakhs	0.40	13.40

f. Workers Population, 2011 Census

Sl. No.	Item	Unit	State	All India
1	Total workers	Lakhs	163.42	4,818.89
	a. Rural	Lakhs	113.28	3,487.43
	b. Urban	Lakhs	50.14	1,331.46
c	Cultivators	Lakhs	31.51	1,188.08
d	Agriculture Labourers	Lakhs	59.15	1,443.34
e	Household Industries	Lakhs	7.77	183.38
f	Others	Lakhs	64.99	2,004.09
2	Main workers	Lakhs	137.20	3,625.66
	a. Rural	Lakhs	95.52	2,458.69
	b. Urban	Lakhs	41.68	1,166.97
c	Cultivators	Lakhs	29.94	959.42
d	Agriculture Labourers	Lakhs	45.90	861.69
e	Household Industries	Lakhs	6.36	123.33
f	Others	Lakhs	55.00	1,681.22
3	Marginal workers	Lakhs	26.22	1,193.23
	a. Rural	Lakhs	17.77	1,028.75
	b. Urban	Lakhs	8.45	164.49
c	Cultivators	Lakhs	1.57	228.66
d	Agriculture Labourers	Lakhs	13.25	581.65
e	Household Industries	Lakhs	1.41	60.05
f	Others	Lakhs	9.99	322.87
4	Non Workers	Lakhs	186.62	7,289.66

g. Age Group wise Population, 2011 Census

(in Lakh Nos.)

Sl. No.	Age Group	All	SCs	STs	Others
1	0-4	26.88	4.00	2.92	19.96
2	5-14	66.98	10.69	7.80	48.49
3	15-19	34.21	5.68	3.42	25.11
4	20-24	34.24	5.43	3.02	25.79
5	25-29	33.13	4.99	2.98	25.16
6	30-34	27.54	4.04	2.44	21.06
7	35-39	26.58	4.03	2.27	20.28
8	40-49	39.45	5.98	3.20	30.28
9	50-59	25.41	3.85	1.95	19.60
10	60+	32.70	4.98	2.49	25.22
11	Age Not Stated	4.82	0.66	0.38	3.79
All Ages		351.94	54.33	32.87	264.74

Note: including the population pertains to the villages transferred to residual AP.

3. State Economy

a. Gross State Domestic Product at Current Prices

(Rs. in Crore)

Sl. No.	Industry	2014-15 (FRE)	2015-16 (AE)
1	Agriculture, Forestry and Fishing	75,459	74,600
1.1	Crops	41,555	36,039
1.2	Livestock	28,872	32,865
1.3	Forestry and Logging	2,363	2,372
1.4	Fishing and Aquaculture	2,670	3,323
2	Mining and Quarrying	18,227	19,846
	Primary Sector	93,686	94,446
3	Manufacturing	65,470	70,850
4	Electricity, Gas, Water Supply & other utility services	7,515	8,286
5	Construction	27,539	29,730
	Secondary Sector	1,00,524	1,08,867
6	Trade, Repair, Hotels and Restaurants	65,032	74,670
6.1	Trade & Repair Services	56,120	64,387
6.2	Hotels & Restaurants	8,912	10,283

Note: Totals may not tally due to rounding off

a. Gross State Domestic Product at Current Prices
(Rs. in Crore)

Sl. No.	Industry	2014-15 (FRE)	2015-16 (AE)
7	Transport, Storage, Communication and Services related to broadcasting	37,696	42,272
7.1	Railways	1,992	1,998
7.2	Road Transport	21,480	23,839
7.3	Air Transport	391	427
7.4	Services incidental to transport	6,381	7,644
7.5	Storage	201	228
7.6	Communication and Services related to broadcasting	7,251	8,136
8	Financial Services	28,851	30,671
9	Real Estate, Ownership of dwellings and prof. Services	94,221	1,09,751
9.1	Public Administration	20,555	22,904
9.2	Other Services	41,064	50,064
	Tertiary Sector	2,87,419	3,30,332
	GSDVA at Basic Prices	4,81,629	5,33,644
	Gross State Domestic Product	5,22,001	5,83,117
	Net State Domestic Product	4,74,951	5,31,103
	Per Capita NSDP (Rupees)	1,29,182	1,43,023

**b. Gross State Domestic Product at Constant
(2011-12) Prices** (Rs. in Crore)

Sl. No.	Industry	2014-15 (FRE)	2015-16 (AE)
1	Agriculture, Forestry and Fishing	57,471	54,894
1.1	Crops	31,022	25,376
1.2	Livestock	22,535	25,293
1.3	Forestry and Logging	1,884	1,834
1.4	Fishing and Aquaculture	2,031	2,392
2	Mining and Quarrying	16,647	17,795
	Primary Sector	74,118	72,689
3	Manufacturing	59,049	64,659
4	Electricity, Gas, Water Supply & other utility services	6,185	6,702
5	Construction	23,191	24,637
	Secondary Sector	88,425	95,997
6	Trade, Repair, Hotels and Restaurants	50,544	55,355
6.1	Trade & Repair Services	43,630	47,746
6.2	Hotels & Restaurants	6,913	7,609

Note: Totals may not tally due to rounding off

**b. Gross State Domestic Product at Constant
(2011-12) Prices** (Rs. in Crore)

Sl. No.	Industry	2014-15 (FRE)	2015-16 (AE)
7	Transport, Storage, Communication and Services related to broadcasting	31,297	34,177
7.1	Railways	1,701	1,739
7.2	Road Transport	18,518	20,174
7.3	Air Transport	343	372
7.4	Services incidental to transport	4,238	4,561
7.5	Storage	164	181
7.6	Communication and Services related to broadcasting	6,332	7,151
8	Financial Services	26,341	28,868
9	Real Estate, Ownership of dwellings and prof. Services	76,318	85,892
9.1	Public Administration	16,516	17,770
9.2	Other Services	31,741	36,382
	Tertiary Sector	2,32,757	2,58,443
	GSVA at Basic Prices	3,95,300	4,27,129
	Gross State Domestic Product	4,29,001	4,68,656
	Net State Domestic Product	3,87,837	4,24,115
	Per Capita NSDP (Rupees)	1,05,488	1,14,212

c. Growth of Gross State Domestic Product at Constant (2011-12) Prices

(Percentage Growth)

Sl. No.	Industry	2014-15 (FRE)	2015-16 (AE)
1	Agriculture, Forestry and Fishing	-5.3	-4.5
1.1	Crops	-14.2	-18.2
1.2	Livestock	8.2	12.2
1.3	Forestry and Logging	1.4	-2.7
1.4	Fishing and Aquaculture	8.5	17.8
2	Mining and Quarrying	21.7	6.9
	Primary Sector	-0.4	-1.9
3	Manufacturing	5.8	9.5
4	Electricity, Gas, Water Supply & other utility services	-14.7	8.4
5	Construction	4.9	6.2
	Secondary Sector	3.8	8.6
6	Trade, Repair, Hotels and Restaurants	11.9	9.5
6.1	Trade & Repair Services	12.3	9.4
6.2	Hotels & Restaurants	9.3	10.1

c. Growth of Gross State Domestic Product at Constant (2011-12) Prices

(Percentage Growth)

Sl. No.	Industry	2014-15 (FRE)	2015-16 (AE)
7	Transport, Storage, Communication and Services related to broadcasting	8.8	9.2
7.1	Railways	-4.6	2.3
7.2	Road Transport	9.6	8.9
7.3	Air Transport	16.6	8.2
7.4	Services incidental to transport	8.4	7.6
7.5	Storage	10.4	10.4
7.6	Communication and Services related to broadcasting	10.4	12.9
8	Financial Services	8.8	9.6
9	Real Estate, Ownership of dwellings and prof. Services	11.4	12.5
9.1	Public Administration	35.7	7.6
9.2	Other Services	8.2	14.6
	Tertiary Sector	11.8	11.0
	GSVA at Basic Prices	7.5	8.1
	Gross State Domestic Product	8.8	9.2
	Net State Domestic Product	9.2	9.4
	Per Capita NSDP (Rupees)	8.1	8.3

4. State Budget

Budget Estimates, 2015-16

Sl. No.	Item	Budget Estimates (Rs. in Lakh)
I	Budget Outlay	1,15,68,919.32
a	Plan Expenditure	52,40,454.93
b	Non Plan Expenditure	63,28,464.39
II	Receipts and Expenditure	
i	Revenue Account:	
a	Receipts	94,13,151.15
b	Expenditure	93,60,021.15
c	Surplus/ Deficit	53,130.00
ii	Capital Account (Net)	
a	Receipts	21,55,456.00
b	Expenditure	22,08,898.17
c	Surplus/ Deficit	-53,442.17
iii	Overall Budget	
a	Receipts	1,15,68,607.15
b	Total Expenditure	1,15,68,919.32
c	Surplus / Deficit	-312.17

5. Agriculture and Allied Activities

a. Rainfall in 2014-15

Sl. No.	Item	(in mms.)	
1.	Cumulative Rainfall		
a	Normal	905.3	
b	Actual	682.1	
c	% Deviation	- 24.7	
2	Season wise Rainfall	(in mms.)	
	Season	Normal	Actual
a	South West Monsoon (June to September)	713.5	494.7
b	North East Monsoon (October to December)	129.5	54.4
c	Winter Period (January to February)	11.5	13.0
d	Hot Weather Period (March to May)	50.8	120.0
3	Rain gauge network	(Nos.)	
a	Automatic Weather Stations	831	
b	Revenue Rain gauges	459	

b. Land Utilization, 2014-15

(Area in Lakh hectares)

Sl. No.	Item	Area	% to GA
1	Forests	25.40	22.66
2	Barren & Un Culturable Land	6.07	5.42
3	Land Put to Non Agricultural uses	8.85	7.90
4	Culturable waste	1.83	1.63
5	Permanent pastures and other grazing lands	2.99	2.67
6	Land under Misc. Tree crops and groves not included in net area sown	1.12	1.00
7	Current fallows	14.01	12.49
8	Other fallow lands	8.05	7.18
9	Net area sown	43.77	39.05
10	Total Geographical Area (GA)	112.08	100.00
11	Gross cropped area	53.15	47.42
12	Net Area irrigated	17.26	15.40
13	Gross area irrigated	25.29	22.56
14	Gross area irrigated to gross cropped area (%)		47.58

c. Area, Yield and Production of important Crops, 2014-15

Sl. No.	Crops	Area (in'000 Hects.)	Yield (in Kgs/ Hects.)	Production (in '000 MTs.)
i	Cereals and Millets			
1	Rice	1,415	3,211	4,545
2	Jowar	79	1,054	83
3	Bajra	11	937	11
4	Maize	691	3,338	2,308
5	Ragi	2	1,145	2
6	Others	7	-	6
	Total	2,205	-	6,955
ii	Pulses			
1	Bengal gram	59	1,370	81
2	Red gram	221	495	109
3	Green gram	87	513	45
4	Black gram	28	583	16
5	Other Pulses	13	-	12
	Total	408	-	263
iii.	Total Food Grains	2,613	-	7,218

c. Area, Yield and Production of important Crops, 2014-15

Sl. No.	Crops	Area (in'000 Hects.)	Yield (in Kgs/ Hects.)	Production (in '000 MTs.)
iv	Oil Seeds			
1	Groundnut	155	1907	295
2	Seasamum	24	405	10
3	Castor	51	578	29
4	Sunflower	18	1,397	26
5	Soya bean	243	1,081	262
6	Other Oil seeds	9	-	100
	Total	500	-	722
v	Other Crops			
1	Chillies	73	3,456	253
2	Sugarcane (Gur)	38	8,783	335
3	Cotton (Lint)	1,693	360	3,583
4	Turmeric	43	4,974	216

d. Area, Yield and Production of important Fruits, Vegetables and Flower Crops, 2014-15

Sl. No.	Crops (bearing Area)	Bearing Area (in '000 Hects.)	Yield (in Kgs/ Hects.)	Production (in '000 MTs.)
1	Mango	93.45	6,055	565.82
2	Batavia	28.84	21,941	632.66
3	Acid lime (Nimma)	5.34	10,935	58.38
4	Grapes	0.52	11,328	5.87
5	Guava	1.72	9,726	16.71
6	Papaya	0.86	25,700	22.15
7	Sapota	0.62	12,018	7.42
8	Pomegranate	0.58	6,085	3.51
9	Watermelon	3.89	29,203	113.54
10	Bottle guard	0.53	12,049	6.37
11	Bhendi	10.86	13,693	148.71
12	Brinjals	10.76	15,701	168.86
13	Tomato	32.12	15,661	503.01
14	Green leafy vegetables	5.42	5,191	28.12
15	Rose	0.43	6,315	2.74
16	Jasmine	0.14	2,218	0.32
17	Marigold	0.87	3,410	2.96
18	Asters	0.29	3,143	0.91

e. Source wise Gross Area Irrigated, 2014-15

Sl. No.	Source	Gross Area Irrigated (in Lakh Hects.)	% of Irrigated Area over Gross Area Irrigated
a	Canals	2.43	9.61
b	Tanks	1.13	4.47
c	Tube Wells	14.19	56.11
d	Other Wells	6.97	27.56
e	Other Sources	0.57	2.25
	Total	25.29	100.00

f. Census of Land Holdings, 2010-11

Sl. No.	Size Class	Holdings (Lakh Nos.)	Area (Lakh Hects.)	Av. Size of holdings
1	Marginal (up to 1 Hect.)	34.41 (62)	15.67 (25)	0.46
2	Small (1-2 Hects.)	13.27 (24)	18.69 (30)	1.41
3	Semi Medium (2-4 Hects.)	6.03 (11)	15.85 (26)	2.63
4	Medium (4-10 Hects.)	1.67 (3)	9.27 (15)	5.55
5	Large (10.0 Hects.& above)	0.16 (N)	2.49 (4)	15.56
	Total	55.54	61.97	1.12

Note: Figures in brackets are percent to total

f. Census of Land Holdings, 2010-11

Sl. No.	Item	Unit	Quantity	% over State
1	Operational Holdings			
a	Scheduled Castes	Lakh Nos.	7.43	13.40
b	Scheduled Tribes	Lakh Nos.	6.72	12.10
c	Other Social Groups	Lakh Nos.	41.38	74.50
d	Institutional	Lakh Nos.	0.01	N
	Total		55.54	100.00
2	Area Operated			
a	Scheduled Castes	Lakh Hects.	5.88	9.48
b	Scheduled Tribes	Lakh Hects.	7.71	12.44
c	Others	Lakh Hects.	48.28	77.91
d	Institutional	Lakh Hects.	0.10	0.17
	Total		61.97	100.00

Note: N : Negligible

6. Forests, 2014-15

Sl. No.	Item	Unit	Quantity
I	Forest Area		
1	Total Forest Cover	Sq. Kms	27,292
2	Protected	Sq. Kms	6,953.47
3	Reserved	Sq. Kms	19,696.23
4	Unclassified	Sq. Kms	642.30
II	Sale of Forest Produce		
1	Major Forest Produce		
	Item	Unit	Value
a	Timber	Rs. in Lakh	1,769.31
b	Firewood	Rs. in Lakh	19.34
	Total		1,788.65
2	Minor Forest Produce		
a	Bamboo	Rs. in Lakh	530.18
b	Beedi Leaves	Rs. in Lakh	0.72
c	Others	Rs. in Lakh	3.99
d	Miscellaneous	Rs. in Lakh	7.89
	Total		542.78
	Grand Total (1+2)		2,331.43

7. Veterinary Services

a. Veterinary Extension Services, 2014-15

Sl. No.	Item	Unit	Total
1	Veterinary Institutions	Nos.	2,125
a	SSVH	Nos.	1
b	Poly clinics	Nos.	8
c	Hospitals	Nos.	101
d	Dispensaries	Nos.	906
e.	M.V. Clinics	Nos.	8
f.	Rural Livestock Units (including Mobile Clinics)	Nos.	1,101
2	Cases treated (excluding Livestock farms)	000' Nos.	24,459
3	Castrations done	000' Nos.	337
4	Vaccinations done	000' Nos.	56,928
5	Artificial Insemination Centers	Nos.	3,499
6	Artificial Insemination done	000' Nos.	1,494
7	Calves born	000' Nos.	526
8	Area brought under Development of fodder	000' Acres	438

b. Livestock Census, 2012 (Provisional)

Sl. No.	Item	Unit	Total
1	Cattle	Lakh Nos.	50.34
2	Buffaloes	Lakh Nos.	41.94
3	Sheep	Lakh Nos.	128.75
4	Goats	Lakh Nos.	46.76
5	Pigs	Lakh Nos.	2.52
6	Others	Lakh Nos.	0.09
	Total		270.40
7	Total Poultry	Lakh Nos.	691.59

c. Livestock Production, 2014-15

1	Milk	000' Tonnes	4207.418
2	Meat	000' Tonnes	259.729
3	Chicken	000' Tonnes	245.339
4	Eggs	Lakh Nos.	1,06,185.273

d. Fish and Prawn Production, 2014-15

1	Fish	Tonnes	2,60,010
2	Prawn	Tonnes	8,352
	Total		2,68,362

8. Mining

Production of Principal Minerals, 2014-15

Sl. No.	Mineral	Unit	Quantity	Amount (Rs. in Crore)
A.	Major Minerals			
1	Coal	Tonnes	5,27,18,951	9,088.38
2	Iron Ore	Tonnes	35,000	1.73
3	Manganese Ore	Tonnes	6,640	0.87
4	Barytes	Tonnes	14,849	6.19
5	Dolomite	Tonnes	5,52,621	17.84
6	Feldspar	Tonnes	6,10,648	15.25
7	Laterite	Tonnes	23,51,641	32.80
8	Lime Stone	Tonnes	2,18,97,291	316.69
9	Quartz	Tonnes	5,45,094	11.86
10	Stowing Sand	Tonnes	37,55,725	36.17
11	Shale	Tonnes	1,06,500	0.98
12	White Clay	Tonnes	84,839	0.84
13	Others	Tonnes	-	0.13
	Sub Total			9,529.73

Production of Principal Minerals, 2014-15

Sl. No.	Mineral	Unit	Quantity	Amount (Rs. in Crore)
B.	Minor Minerals			
1	Black Granite	M ³	2,66,028	1,127.13
2	Colour Granite	M ³	8,17,911	2,181.91
3	Gravel / Earth	M ³	2,16,71,693	618.32
4	Fuller's Earth	Tonnes	4,62,411	39.58
5	Lime Stone Slabs	M ²	22,99,827	98.43
6	Mosaic Chips	Tonnes	27,950	1.76
7	Road Metal	M ³	2,94,22,750	2,098.69
8	Ordinary Sand	M ³	26,15,376	101.93
9	Others	-	-	-
	Sub Total			6,267.76
	Grand Total (a+b)			15,797.49

9. Industries and Labour

a. Annual Survey of Industries, 2012-13

Sl. No.	Item	Unit	Total
1	Factories	Nos.	10,279
2	Fixed Capital	Rs. in Crore	59,521
3	Working Capital	Rs. in Crore	(-)31,238
4	Workers	Nos.	5,92,730
5	Employees	Nos.	7,07,738
6	Total Inputs	Rs. in Crore	1,20,647
7	Total Out put	Rs. in Crore	1,54,622
8	Net value added	Rs. in Crore	28,728
9	Depreciation	Rs. in Crore	5,247
10	Gross value added	Rs. in Crore	33,975

b. Annual Average Consumer Price Index Numbers for Industrial Workers, 2014-15

(Base Year: 2001 = 100)

Sl. No.	Series/Centers	Food Index	General Index
I	Central Series		
1	Hyderabad	268	219
2	Warangal	311	262
3	Godavarikhani	295	266
II	State Series		
1	Miryalaguda	322	268
2	Kothagudem	332	263
3	Nizamabad	308	268
	State	-	252
	All India	-	251

c. Company Wise LPG Connections, 2014-15

Sl. No	Company	Unit	Quantity
1	IOCL	Nos.	34,41,799
2	HPCL	Nos.	32,81,167
3	BPCL	Nos.	22,09,569
	Total		89,32,535

d. Labour and Employment, 2015 (as on 31st Dec.)

Sl. No.	Facilities	Unit	Quantity
A	Employment		
1	Employment Exchanges	Nos.	20
2	Registration during the year	Nos.	1,57,264
3	Placements	Nos.	612
4	Applications on live registrar at the end of the year	Nos.	9,90,848
B	Industrial disputes		
1	Disputes (Strikes & Lockouts)	Nos.	5
2	Workers involved	Nos.	3,006
3	Man-days lost	Nos.	5,70,960

e. Employment in shops and commercial establishments, 2014-15 (in Nos.)

Sl. No.	Category	Establishments	Workers Employed
1	Shops	56,653	2,17,505
2	Commercial Establishments	25,098	1,28,844
3	Cinema Theaters, Hotels and Restaurants	7,595	38,284
	Total	89,346	3,84,633

10. Energy

Electricity Generated and Consumption, 2015-16

Sl. No.	Source	Unit	Total
1	Installed capacity	MW	8,871
2	Electricity generated		
a	Thermal	MU	12,231
b	Hydel	MU	2,910
c	Others	MU	24,430
	Total		39,571
3	Power Consumption, 2014-15		
A	Low Tension		
a	Domestic	MU	8,596
b	Non Domestic	MU	2,476
c	Industrial	MU	1,099
d	Cottage Industries	MU	15
e	Agriculture	MU	11,671
f	Others	MU	1,061
	Total (LT)		24,918
B	High Tension	MU	14,593
	Total (LT + HT)		39,511

Electricity Generated and Consumption, 2015-16

Sl. No.	Source	Unit	Quantity
4	Service Connections		
a	Domestic	Nos.	89,38,700
b	Non-Domestic	Nos.	10,77,766
c	Industrial	Nos.	88,627
d	Cottage	Nos.	16,377
e	Agriculture	Nos.	20,06,428
f	Public lighting	Nos.	1,08,212
g	General Purpose	Nos.	51,053
5	Temporary	Nos.	500
	Total (LT)		1,22,87,663
6	Total (HT)		9,875
	Grand Total (LT + HT)		1,22,97,538
7	Agriculture pump sets energized	Nos.	20,06,428

11. Roads, Transport and Communications, 2014-15

Sl. No.	Types of Transport	Quantity (in Nos.)
a	Transport (vehicles)	
1	TSRTC Buses	15,326
2	Goods Carriages	4,45,044
3	Auto Rickshaws	2,94,262
4	Cabs	65,780
5	Contract Carriages	7,141
6	Private service Vehicles	2,416
7	Educational Institution Vehicles	20,232
8	Other Transport	24,215
9	Motor Cycles	58,14,854
10	Light Motor Vehicles	9,38,801
11	Tractors & Trailer for Agril. purpose	1,76,536
12	Road Rollers	708
13	Fire Tenders	274
14	Other Non-Transport	32,957
Total Vehicles		78,38,546

b. Road Network

Sl. No.	Types of Roads	Unit	Length
1	PWD Roads	kms	24,245
2	National Highways	kms	2,573
3	Panchayat Raj Department	kms	70,201
Total			97,019

c. Communications

Sl. No.	Item	Unit	Quantity
i	Post offices		
1	Head offices	Nos.	36
2	Sub-offices	Nos.	822
3	Mukhya Dak Ghar	Nos.	1
4	Branch offices	Nos.	4,973
Total			5,832
ii. Telecommunications (BSNL)			
1	Telephone Exchanges	Nos.	1,314
2	Telephone Connections (excluding Cell Phones)	Nos.	6,24,224
3	Public Telephones	Nos.	13,223

d. Scheduled Commercial Banks, 2015

(as on 31st December)

Sl. No.	Item	Unit	Quantity
1	Nationalized Banks	Nos.	1,855
2	State Bank and its Associate Banks	Nos.	1,246
3	Private Sector Banks	Nos.	737
4	Foreign Banks	Nos.	12
5	Regional Rural Banks	Nos.	798
Total			4,648
6	Total Deposits	Million Rs.	32,81,050
7	Total Credits	Million Rs.	33,89,147
8	Credit Deposit Ratio	Ratio	103.29
9	Average Population per Bank Office	000' Nos.	8

12. Education

a. Schools Network, 2014-15

Sl. No.	Category	No. of Institutions	No. of Enrolment of Students
1	Primary Schools (I-V)	25,289	23,14,786
2	Primary with Upper Primary Schools (I-VII / VIII)	7,263	10,61,902
3	Primary with Upper Primary Schools, Secondary and Higher Secondary Schools (I-XII)	132	90,771
4	Upper Primary with Secondary & Higher Secondary Schools (VI-XII)	204	78,910
5	Primary with Upper Primary and Secondary Schools (I-X)	1,008	3,83,749
6	Upper Primary with Secondary Schools (VI-X)	9,965	22,23,292
Total		43,861	61,53,410

b. Working of Teachers & Teacher-Student Ratio, 2014-15

Sl. No.	Category	No. of Teachers	Teacher Student Ratio
1	Primary Schools (I-V)	84,147	28
2	Primary with Upper Primary Schools (I-VII / VIII)	45,857	23
3	Primary with Upper Primary Schools, Secondary and Higher Secondary Schools (I-XII)	2,281	40
4	Upper Primary with Secondary & Higher Secondary Schools (VI-XII)	3,166	25
5	Primary with Upper Primary and Secondary Schools (I-X)	10,189	38
6	Upper Primary with Secondary Schools (VI-X)	94,493	24
Total		2,40,133	26

c . Management wise Schools, 2014-15

Sl. No.	Category	Nos.
1	Central Government	47
2	State Government	4,361
3	MPP/ZPP	24,346
4	Private Aided	778
5	Private Unaided	13,675
6	Other Schools	654
Total		43,861

d. Gross Enrolment Ratio and Dropout Rate, 2014-15

Sl. No.	Category	Ratio		
		All	SCs	STs
1	Gross Enrolment			
a	Classes I-V	100.19	105.63	108.97
b	Classes VI-VIII	86.93	91.08	86.38
c	Classes IX-X	76.42	84.42	70.88
2	Dropout Rate	Rate		
a	Classes I-V	19.25	21.61	40.33
b	Classes I-VIII	31.14	32.00	53.83
c	Classes I-X	37.56	35.10	62.48

e. Special Schools, 2014-15

Sl. No.	Category	No. of	
		Schools	Enrolment
1	Deaf and Dumb Schools	9	1,030
2	Schools for Mentally Challenged	4	509
3	Schools for Oriental Education	6	659
4	Schools for Blind	8	572

f. Government Hostels and Ashram Schools, 2014-15

Sl. No.	Category	Hostels		Ashram Schools	
		Nos.	Students	Nos.	Students
1	Scheduled Castes	780	61,526	-	-
2	Scheduled Tribes	203	43,361	283	84,558
3	Backward Classes	737	58,428	-	-

g. Educational Institutions, 2014-15

Sl. No.	Items	Number of	
		Colleges	Seats
1	Junior Colleges	2493	3,42,754
2	Degree Colleges	195	1,41,250
3	Professional Colleges		
a	Medical Colleges (MBBS)	21	2,500
b	Dental Colleges	13	1,180
c	B.Ed. Colleges	274	29,044
d	Engineering Colleges	354	96,648
e	MBA Colleges	431	55,034
f	MCA Colleges	88	5,846
g	Pharmacy Colleges	171	16,320
h	Polytechnic colleges	54	61,790
i	Ayurveda Colleges	5	250
j	Homeopathy Colleges	2	110
k	Naturopathy Colleges	1	30
l	Unani Colleges	2	160
m	Nursing Colleges	79	4,160
n	Physiotherapy Colleges	17	800
o	B.Sc. (MLT) Colleges	23	825
p	DIETs (Dist. Inst. of Ed.Trg.)	10	2,800

13. Medical Services, 2014-15

Sl. No.	Facilities	Nos.
A	Allopathic Hospitals	
1	General Hospitals	108
2	Hospital for special treatment	17
3	Primary Health Centers	671
4	Dispensaries	70
5	Beds available	22,495
6	Doctors (including Contract)	3742
B	Hospitals under AYUSH	
1	Ayurveda	
a	Hospitals	4
b	Dispensaries	428
2	Homeopathy	
a	Hospitals	3
b	Dispensaries	201
3	Naturopathy	
a	Hospitals	1
b	Dispensaries	28
4	Unani	
a	Hospitals	3
b	Dispensaries	187

C. Health Indices

Sl. No.	Item	Rate
1	Maternity Mortality Ratio (2011-13)	92
2	Infant Mortality Rate (2013)	39
3	Total Fertility Rate (2013)	1.8
4	Contraceptive Prevalence Rate (2013)	66.7
5	Crude Birth Rate (2013)	17.4
6	Adult sex Ratio (2011)	998
7	Child Sex Ratio (2011)	933
8	Full Immunization	48.3

D. Rural Water Supply, 2014-15

Sl. No.	Item	Nos.
1	Hand Pumps	1,57,814
2	Piped Water Supply Schemes	24,961
3	Comprehensive Piped Water Supply Schemes	140
4	Individual Sanitary Latrines	1,51,025

14. Social Services

a. Public Distribution System, 2014-15

(as on 31st Dec, 2014)

Sl. No.	Items	Unit	Quantity
1	AAY	Nos.	7,71,798
2	Annapurna	Nos.	15,037
3	White	Nos.	73,99,508
4	Pink	Nos.	15,07,599
5	Others	Nos.	4,49,684
	Total		1,01,43,626
4	Fair Price Shops	Nos.	17,226
5	Rythu Bazars	Nos.	36

b. Allotment of Rice and Sugar, 2014-15

(April, 2014 to March, 2015)

Sl. No.	Items	Unit	Quantity
1	Rice	Qtls.	15,31,150
2	Sugar	Qtls.	4,474

**c. Houses completed under Weaker Section
Housing Programme, 2014-15**

Sl. No.	Area	Unit	Quarterly
1	Rural	Nos.	57,437
2	Urban	Nos.	2,168
Total			59,605

d. Aasara Pensions, 2014-15

Sl. No.	Category	Unit	Quantity
1	Old Age	Nos.	13,57,602
2	Widows	Nos.	12,77,403
3	Disabled	Nos.	3,94,953
4	Weavers	Nos.	30,607
5	Toddy Tappers	Nos.	50,970
6	Abhayastham	Nos.	16,826
7	FA to Beedi Workers	Nos.	2,56,683
Total			33,85,044

e. House Sites Distributed to Weaker Sections, 2014-15

Sl. No.	Item	Unit	Quantity
1	Beneficiaries	Nos.	3,000
2	Extent of land distributed	Acres	94.10

15. Prices

Annual Average Retail Prices of certain essential commodities, 2014-15

Sl. No.	Commodity	Unit	Rupees
1	Rice		
a	Super Fine	Kg.	41.98
b	Fine	Kg.	35.81
c	Common	Kg.	25.10
2	Red gram Dal		
a	Grade - I	Kg.	77.89
b	Grade - II	Kg.	69.80
3	Ground nut Oil	Liter	90.73
4	Tamarind		
a	Grade - I (with out seed)	Kg.	81.46
b	Common (with out seed)	Kg.	69.71
c	Ordinary (with seed)	Kg.	32.23

Annual Average Retail Prices of certain essential commodities, 2014-15

Sl. No.	Commodity	Unit	Rupees
5	Onions		
a	Grade - I	Kg.	21.78
b	Grade - II	Kg.	18.13
6	Red Chillies		
a	Grade - I	Kg.	93.19
b	Grade - II	Kg.	81.85
7	Cereals		
a	Wheat	Kg.	28.25
b	Jowar	Kg.	26.99
c	Ragulu	Kg.	28.51
d	Bajra	Kg.	22.63

Annual Average Retail Prices of certain essential commodities, 2014-15

Sl. No.	Commodity	Unit	Rupees
8	Dals		
a	Gram Dal	Kg.	46.17
b	Moong Dal (Split, green)	Kg.	101.91
c	Urad Dal (Split, black)	Kg.	87.00
9	Oils		
a	Palmoline	Liter	62.35
b	Sunflower	Liter	78.00
c	Vanaspathi	Liter	71.57
10	Salt		
a	Iodized	Kg.	14.14
b	Crystal	Kg.	8.22
11	Turmeric Powder	100 gr.	15.21

16. Self Help Groups, 2014-15

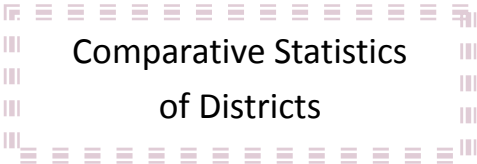
Sl. No.	Item	Unit	Quantity
1	Self Help Groups	Nos.	4,28,346
2	Self Help Group Members	Nos.	47,15,173
3	Self Help Group provided with Bank credit	Nos.	1,88,569
4	Amount of credit	Rs. Crore	3,575.75

17. Women and Child Welfare, 2014-15

Sl. No.	Item	Unit	Quantity
1	Anganwadi Centers	Nos.	35,700
2	Anganwadi Workers	Nos.	36,283
3	Anganwadi Helpers	Nos.	32,082

18. Tourism, 2014-15

Sl. No.	Item	Unit	Quantity
1	Tourist Arrivals	Nos.	9,46,42,394
2	Domestic	Nos.	9,45,16,316
3	Foreign	Nos.	1,26,078



Comparative Statistics of Districts

a. Demographic Characteristics of Districts, 2011 Census

Sl. No.	Districts	Area (Sq. Kms.)	Population (in Lakhs)	Sex Ratio	Density	Decadal Growth Rate
1	Adilabad	16,105	27.41	1,001	170	10.18
2	Nizamabad	7,956	25.52	1,040	321	8.77
3	Karimnagar	11,823	37.76	1,008	319	8.15
4	Medak	9,699	30.33	992	313	13.60
5	Hyderabad	217	39.43	954	18,172	2.97
6	Rangareddy	7,493	52.97	961	707	48.16
7	Mahabubnagar	18,432	40.53	977	220	15.34
8	Nalgonda	14,240	34.89	983	245	7.41
9	Warangal	12,846	35.13	997	273	8.21
10	Khammam	13,266	26.07	1,008	197	8.47
Total		1,12,077	350.04	988	312	13.58

b. Gross District Domestic Product & Per Capita Income (PCI) at Current Prices for 2014-15 (FRE)

Sl. No.	District	GDDP		PCI	
		Rs. Crore	Rank	Rupees	Rank
1	Adilabad	23,878	9	76,921	10
2	Nizamabad	22,585	10	78,828	9
3	Karimnagar	38,582	4	90,184	6
4	Medak	43,528	3	1,21,639	3
5	Hyderabad	1,25,882	1	2,94,220	1
6	Rangareddy	1,20,817	2	1,80,039	2
7	Mahabubnagar	37,203	6	80,121	8
8	Nalgonda	45,072	5	1,14,353	4
9	Warangal	32,033	8	81,221	7
10	Khammam	32,421	7	1,02,919	5
State		5,22,001	-	1,29,182	-

c. Sixth Economic Census
i. Working of Enterprises (Provisional)

Sl. No.	District	No. of Enterprises		
		Rural	Urban	Total
1	Adilabad	77,743	32,562	1,10,305
2	Nizamabad	86,440	26,917	1,13,357
3	Karimnagar	1,18,110	41,944	1,60,054
4	Medak	1,59,856	43,027	2,02,883
5	Hyderabad	-	3,54,047	3,54,047
6	Rangareddy	70,625	2,00,408	2,71,033
7	Mahabubnagar	1,46,123	42,076	1,88,199
8	Nalgonda	2,29,478	47,434	2,76,912
9	Warangal	1,42,932	56,133	1,99,065
10	Khammam	1,49,816	60,598	2,10,414
Total		11,81,123	9,05,146	20,86,269

ii. Persons Employed

(Provisional)

Sl. No.	District	No. of Persons Employed		
		Rural	Urban	Total
1	Adilabad	1,28,547	91,209	2,19,756
2	Nizamabad	2,46,434	86,622	3,33,056
3	Karimnagar	2,56,498	1,15,014	3,71,512
4	Medak	3,21,624	1,55,335	4,76,959
5	Hyderabad	-	14,74,118	14,74,118
6	Rangareddy	1,85,554	7,98,457	9,84,011
7	Mahabubnagar	2,74,912	1,08,272	3,83,184
8	Nalgonda	4,05,671	1,23,972	5,29,643
9	Warangal	2,31,647	1,47,065	3,78,712
10	Khammam	2,99,701	1,61,548	4,61,249
Total		23,50,588	32,61,612	56,12,200

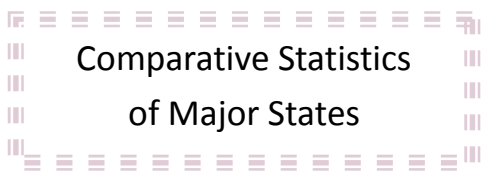
d. Pooled Estimates of MPCE(MMRP) NSS 68th Round

Sl. No.	District	Food	Non Food	Total
A. Rural Sector, 2011-12		(Rupees)		
1	Adilabad	718.44	633.47	1,434.44
2	Nizamabad	645.58	661.54	1,425.88
3	Karimnagar	695.98	758.47	1,576.90
4	Medak	747.59	794.87	1,614.82
5	Hyderabad	-	-	-
6	Rangareddy	833.70	1,008.42	1,933.49
7	Mahabubnagar	902.56	682.99	1,661.57
8	Nalgonda	817.36	899.15	2,012.00
9	Warangal	904.07	761.28	1,771.80
10	Khammam	936.14	802.10	1,962.44
State		788.10	803.20	1,725.60
B. Urban Sector, 2011-12		(Rupees)		
1	Adilabad	824.89	1,210.40	2,083.80
2	Nizamabad	778.43	907.42	1,759.30
3	Karimnagar	869.34	1,299.60	2,226.00
4	Medak	870.55	1,175.70	2,173.10
5	Hyderabad	1,196.80	1,721.90	3,036.70
6	Rangareddy	955.97	1,173.30	2,271.40
7	Mahabubnagar	1,007.80	946.65	1,948.70
8	Nalgonda	893.58	1,039.70	2,068.50
9	Warangal	1,025.00	1,644.30	2,702.20
10	Khammam	976.33	1,144.70	2,196.60
State		1,113.50	1,605.16	2,804.36

Note: Calculated following inverse weighted average method

e. Human Development Index, 2004-05 and 2011-12

Sl. No.	District	2004-05		2011-12	
		Index	Rank	Index	Rank
1	Adilabad	0.289	6	0.508	6
2	Nizamabad	0.251	10	0.466	8
3	Karimnagar	0.350	4	0.521	4
4	Medak	0.261	9	0.446	10
5	Hyderabad	0.631	1	0.764	1
6	Rangareddy	0.364	2	0.605	2
7	Mahabubnagar	0.270	8	0.464	9
8	Nalgonda	0.320	5	0.500	7
9	Warangal	0.356	3	0.534	3
10	Khammam	0.286	7	0.519	5
State		0.343	-	0.513	-



Comparative Statistics of Major States

a. Demographic Characteristics of States, 2011 Census

Sl. No.	Major States	Area (000' Sq.Kms)	Popula-tion (in Lakh)	Sex Ratio	Decadal Growth Rate	Den-sity
1	Andhra Pr.	163.0	496	997	9.21	304
2	Assam	78.4	312	958	17.0	398
3	Bihar	94.2	1,041	918	25.4	1106
4	Gujarat	196.2	604	919	19.3	308
5	Haryana	44.2	254	879	19.9	573
6	Karnataka	191.8	611	973	15.6	319
7	Kerala	38.9	334	1,084	4.9	860
8	Madhya Pr.	308.3	726	931	20.3	236
9	Maharashtra	307.7	1,124	929	15.9	365
10	Odisha	155.7	420	979	14.0	270
11	Punjab	50.4	277	895	13.9	551
12	Rajasthan	342.2	685	928	21.3	200
13	Tamilnadu	130.1	721	996	15.6	555
14	Telangana	112.1	350	988	13.6	312
15	Uttar Pr.	240.9	1998	912	18.8	829
16	West Bengal	88.8	913	950	13.8	1,028
All India		3287.5	12,109	943	17.7	382

b. Literacy Rate, 2011 Census

Sl. No.	Major States	Males	Females	Persons
1	Andhra Pradesh	74.77	59.96	67.35
2	Assam	77.85	66.27	72.19
3	Bihar	71.20	51.50	61.80
4	Gujarat	85.75	69.68	78.03
5	Haryana	84.06	65.94	75.55
6	Karnataka	82.47	68.08	75.36
7	Kerala	96.11	92.07	94.00
8	Madhya Pradesh	78.73	59.24	69.32
9	Maharashtra	88.38	75.87	82.34
10	Odisha	81.59	64.01	72.87
11	Punjab	80.44	70.73	75.84
12	Rajasthan	79.19	52.12	66.11
13	Tamilnadu	86.77	73.44	80.09
14	Telangana	75.04	57.99	66.54
15	Uttar Pradesh	77.28	57.18	67.68
16	West Bengal	81.69	70.54	76.26
	All India	80.88	64.63	72.98

c. Gross State Domestic Product

i. GSDP and Per Capita Income (PCI) at Current Prices for 2014-15 (FRE)

Sl. No.	Major States	GSDP (Rs. Crore)	Rank	PCI (Rupees)	Rank
1	Andhra Pradesh	5,32,922	7	95,689	7
2	Assam	1,95,145	17	53,618	17
3	Bihar	4,10,862	12	34,856	12
4	Gujarat	8,95,202	5	1,24,358	5
5	Haryana	4,41,864	11	1,50,260	11
6	Karnataka	9,07,839	4	1,30,897	4
7	Kerala	5,19,896	9	1,38,390	9
8	Madhya Pradesh	4,51,348	10	51,371	10
9	Maharashtra	17,92,122	1	1,34,081	1
10	Odisha	3,09,807	14	63,108	14
11	Punjab	3,68,011	13	1,14,561	13
12	Rajasthan	6,12,194	6	76,881	6
13	Tamilnadu	11,20,620	2	1,35,806	2
14	Telangana	5,22,001	8	1,29,182	8
15	Uttar Pradesh	10,41,997	3	44,197	3
16	West Bengal	NA	NA	NA	NA
	All India	1,24,88,205	-	86,879	-

ii. Gross State Domestic Product & Per Capita Income (PCI) at Constant (2011-12) Prices for 2014-15 (FRE)

Sl. No.	Major States	GSDP (Rs. Crore)	Rank	PCI (Rupees)	Rank
1	Andhra Pradesh	4,44,752	7	79,441	13
2	Assam	1,56,895	17	42,349	22
3	Bihar	3,17,016	12	26,736	25
4	Gujarat	7,82,820	4	1,08,433	7
5	Haryana	3,66,584	11	1,24,092	2
6	Karnataka	7,34,988	5	1,05,350	9
7	Kerala	4,32,361	8	1,15,225	4
8	Madhya Pradesh	3,67,828	10	41,336	23
9	Maharashtra	15,24,846	1	1,13,379	6
10	Odisha	2,59,468	14	52,516	20
11	Punjab	3,13,276	13	96,638	11
12	Rajasthan	5,12,095	6	64,002	15
13	Tamilnadu	9,42,736	2	113817	5
14	Telangana	4,29,001	9	1,05,488	8
15	Uttar Pradesh	8,33,160	3	35,072	24
16	West Bengal	NA	NA	NA	NA
	All India	1,05,52,151	-	72,889	-

iii. Growth of Gross State Domestic Product at Current and Constant (2011-12) Prices for 2014-15 (FRE)

Sl. No.	Major States	Current Prices		Constant Prices	
		GSDP	Rank	GSDP	Rank
1	Andhra Pradesh	13.8	3	7.98	4
2	Assam	11.6	10	3.34	15
3	Bihar	24.7	1	15.56	1
4	Gujarat	11.0	12	7.7	7
5	Haryana	11.7	9	7.98	5
6	Karnataka	13.8	2	7.79	6
7	Kerala	12.3	7	6.67	9
8	Madhya Pradesh	12.5	6	6.76	8
9	Maharashtra	8.8	15	5.76	13
10	Odisha	11.7	8	6.24	10
11	Punjab	10.0	14	4.92	14
12	Rajasthan	11.4	11	6.11	12
13	Tamilnadu	13.6	4	8.65	3
14	Telangana	13.4	5	8.82	2
15	Uttar Pradesh	10.1	13	6.15	11
16	West Bengal	NA	NA	NA	NA
	All India	10.8	-	7.24	-

iv. Gross State Domestic Product and Per Capita Income (PCI) at Current Prices for 2015-16 (AE)

Sl. No.	Major States	GSDP (Rs. Crore)	Growth Rate	PCI (Rupees)	Growth Rate
1	Andhra Pr.	6,03,376	13.22	1,07,532	12.38
2	Assam	NA	NA	NA	NA
3	Bihar	4,86,430	18.39	40,616	16.52
4	Gujarat	NA	NA	NA	NA
5	Haryana	NA	NA	NA	NA
6	Karnataka	NA	NA	NA	NA
7	Kerala	NA	NA	NA	NA
8	Madhya Pr.	5,01,939	11.21	56,253	9.50
9	Maharashtra	NA	NA	NA	NA
10	Odisha	3,32,329	7.27	66,890	5.99
11	Punjab	NA	NA	NA	NA
12	Rajasthan	NA	NA	NA	NA
13	Tamilnadu	NA	NA	NA	NA
14	Telangana	5,83,117	11.71	1,43,023	10.71
15	Uttar Pr.	NA	NA	NA	NA
16	West Bengal	NA	NA	NA	NA
All India		1,35,67,192	8.64	93,231	7.31

Note: NA : Not available

v. Gross State Domestic Product and Per Capita Income (PCI) at Constant (2011-12) Prices for 2015-16 (AE)

Sl. No.	Major States	GSDP (Rs. Crore)	Growth Rate	PCI (Rupees)	Growth Rate
1	Andhra Pr.	4,93,641	10.99	87,487	10.13
2	Assam	NA	NA	NA	NA
3	Bihar	3,49,558	10.27	29,015	8.93
4	Gujarat	NA	NA	NA	NA
5	Haryana	NA	NA	NA	NA
6	Karnataka	NA	NA	NA	NA
7	Kerala	NA	NA	NA	NA
8	Madhya Pr.	4,05,199	10.16	45,046	8.97
9	Maharashtra	NA	NA	NA	NA
10	Odisha	2,75,450	6.16	55,116	4.95
11	Punjab	NA	NA	NA	NA
12	Rajasthan	NA	NA	NA	NA
13	Tamilnadu	NA	NA	NA	NA
14	Telangana	4,68,656	9.24	1,14,212	8.27
15	Uttar Pr.	NA	NA	NA	NA
16	West Bengal	NA	NA	NA	NA
	All India	1,13,50,962	7.57	77,431	6.23

Note: NA : Not available

d. Livestock Census, 2012

(in'000 Nos.)

Sl. No.	Major States	Cattle	Buffaloes	Sheep	Goats
1	Andhra Pr.	4,562	4,194	13,521	4,396
2	Assam	10,308	435	518	6,169
3	Bihar	12,232	7,567	232	12,154
4	Gujarat	9,984	10,386	1,708	4,959
5	Haryana	1,808	6,085	363	369
6	Karnataka	9,516	3,471	9,584	4,796
7	Kerala	1329	102	1	1246
8	Madhya Pr.	19,602	8,188	309	8,014
9	Maharashtra	15,484	5,594	2,580	8,435
10	Odisha	11,621	726	1,581	6,513
11	Punjab	2,428	5,160	129	327
12	Rajasthan	13,324	12,976	9,080	21,666
13	Tamilnadu	8,814	780	4,787	8,143
14	Telangana	5,034	4,194	12,875	4676
15	Uttar Pradesh	19,557	30,625	1,354	15,586
16	West Bengal	16,514	597	1,076	11,506
	All India	1,90,904	1,08,702	65,069	1,35,173

d. Livestock Census, 2012

(in'000 Nos.)

Sl. No.	Major States	Pigs	Total Livestock	Total Poultry
1	Andhra Pradesh	142	29,059	92,175
2	Assam	1,636	19,082	27,216
3	Bihar	650	32,939	12,748
4	Gujarat	4	27,128	15,006
5	Haryana	127	8,820	42,821
6	Karnataka	305	27,702	53,442
7	Kerala	56	2,735	24,282
8	Madhya Pradesh	175	36,333	11,905
9	Maharashtra	326	32,489	77,795
10	Odisha	280	20,732	19,891
11	Punjab	32	8,117	16,794
12	Rajasthan	238	57,732	8,024
13	Tamilnadu	184	22,723	1,17,349
14	Telangana	252	27,040	69,159
15	Uttar Pradesh	1,334	68,715	18,668
16	West Bengal	648	30,348	52,838
	All India	10,294	5,12,057	7,29,209

e. Sixth Economic Census, 2013

Enterprises and Persons Employed

(in lakh Nos.)

Sl. No.	Major States	Enterprises	Persons Employed
1	Andhra Pradesh	42.43	85.91
2	Assam	20.30	39.54
3	Bihar	17.07	32.44
4	Gujarat	39.73	96.08
5	Haryana	11.65	32.37
6	Karnataka	28.81	71.46
7	Kerala	33.55	69.19
8	Madhya Pradesh	21.53	45.48
9	Maharashtra	61.37	145.12
10	Odisha	20.89	43.18
11	Punjab	15.13	36.47
12	Rajasthan	28.95	62.62
13	Tamilnadu	50.29	116.95
14	Telangana	20.88	55.37
15	Uttar Pradesh	66.84	141.18
16	West Bengal	59.06	119.04
	All India	584.95	1,312.94

f. Scheduled Commercial Bank Offices and Credit Deposit Ratio

(as on 30th Sept, 2015)

Sl. No.	Major States	No. of Bank Offices	Population per Bank (in' 000)	Credit Deposit Ratio
1	Andhra Pradesh	6,274	8	103.13
2	Assam	2,139	15	38.82
3	Bihar	6,249	17	32.46
4	Gujarat	7,094	9	70.73
5	Haryana	4,409	6	69.65
6	Karnataka	9,215	7	67.01
7	Kerala	6,039	6	62.06
8	Madhya Pradesh	5,941	12	54.53
9	Maharashtra	11,505	10	93.83
10	Odisha	4,387	10	38.51
11	Punjab	5,953	5	71.36
12	Rajasthan	6,408	11	84.72
13	Tamilnadu	9,689	7	115.01
14	Telangana	4,648	8	103.29
15	Uttar Pradesh	15,621	13	43.73
16	West Bengal	7,416	12	55.67
	All India	1,29,151	9	75.01

g. Annual Survey of Industries Principal Characteristics, 2014

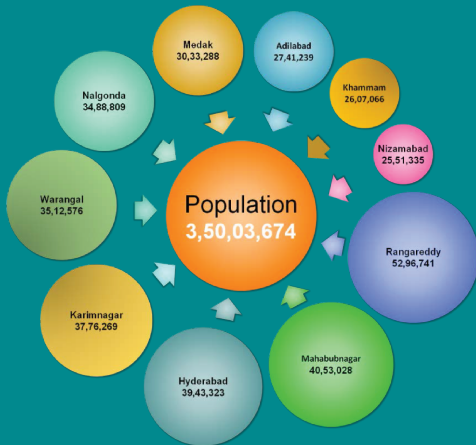
Sl. No.	Major States	No. of Factories	in Lakh Nos.	
			Workers	Persons Engaged
1	Andhra Pradesh	15,719	4.15	5.22
2	Assam	3,518	1.58	1.86
3	Bihar	3,419	0.96	1.14
4	Gujarat	22,876	10.50	13.73
5	Haryana	6,117	4.68	6.12
6	Karnataka	12,107	7.06	9.27
7	Kerala	7,132	2.90	3.52
8	Madhya Pradesh	4,047	2.39	3.23
9	Maharashtra	29,123	13.29	18.86
10	Odisha	2,714	2.07	2.61
11	Punjab	12,278	4.86	6.03
12	Rajasthan	8,820	3.56	4.70
13	Tamilnadu	37,378	16.41	20.47
14	Telangana	14,110	6.29	7.47
15	Uttar Pradesh	14,463	7.02	9.12
16	West Bengal	8,859	5.22	6.46
All India		2,24,576	104.44	135.38

h. Human Development Index, 2004-05 & 2011-12

Sl. No.	Major States	2004-05		2011-12	
		Index	Rank	Index	Rank
1	Andhra Pradesh	0.378	12	0.513	9
2	Assam	0.341	14	0.407	15
3	Bihar	0.241	20	0.376	21
4	Gujarat	0.386	11	0.497	12
5	Haryana	0.426	6	0.556	6
6	Karnataka	0.388	10	0.507	11
7	Kerala	0.579	1	0.662	1
8	Madhya Pradesh	0.268	19	0.388	19
9	Maharashtra	0.419	7	0.559	5
10	Odisha	0.221	21	0.393	18
11	Punjab	0.474	2	0.578	4
12	Rajasthan	0.317	15	0.452	14
13	Tamilnadu	0.450	4	0.591	2
14	Telangana	0.343	13	0.513	10
15	Uttar Pradesh	0.299	16	0.401	17
16	West Bengal	0.388	9	0.485	13
All India		0.361	-	0.480	-

OFFICIALS ASSOCIATED WITH THIS PUBLICATION

Sl. No.	Name (Sarva Sri)	Designation
1	G. Lakshmi Narayana	Joint Director
2	A. Rajasheker Reddy	Assistant Director
3	D. Jayanthi Mala	Dy. Statistical Officer
4	G. Krishnaiah	Dy. Statistical Officer
5	S. Niranjan Reddy	Dy. Statistical Officer
6	B.M.L. Narsimha	Dy. Statistical Officer
7	M. Suri Babu	Dy. Statistical Officer
8	R. Harinath	Dy. Statistical Officer
9	M. Amarender Rao	Asst. Statistical Officer
10	Md. Ishaq	Asst. Statistical Officer



**DIRECTORATE OF ECONOMICS AND STATISTICS
GOVERNMENT OF TELANGANA
HYDERABAD**

Website: www.ecostat.telangana.gov.in