



GOVERNMENT OF TELANGANA DEPARTMENT OF MINES & GEOLOGY



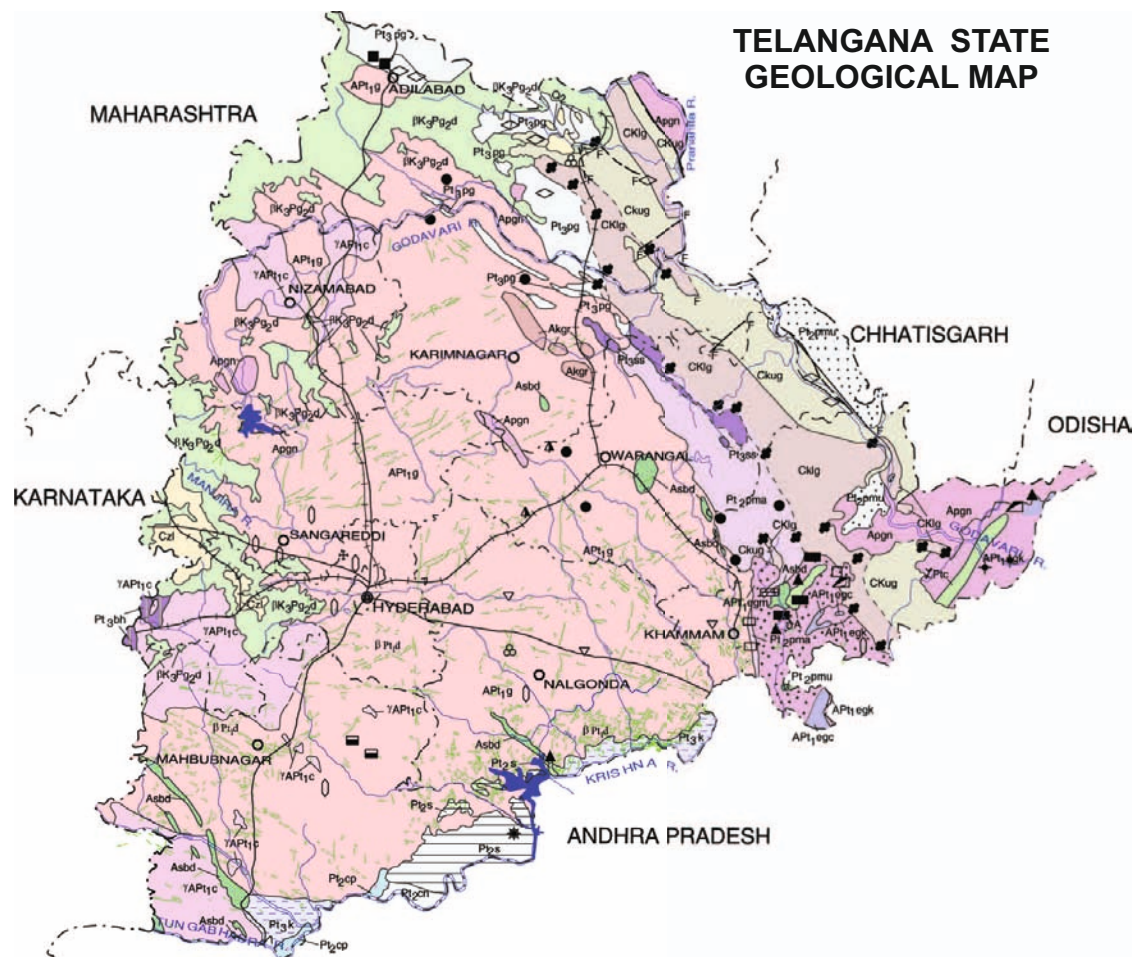
TELANGANA MINERAL RESOURCES & INITIATIVES

One Aim | One Direction | Sustainable Development

HISTORY OF DEPARTMENT OF MINES AND GEOLOGY

- Department of Mines & Geology started functioning under the name & style as "Hyderabad Geological Survey"(HGS) during the year 1921 A.D. The functions of the HGS were: Carrying systematic survey, preparation of information on the mineral resources & technical advice to Govt. & Private persons on geology & mineral occurrences.
- Until 1951, the functions of geological survey and inspection of mines were carried out both by Department of Mines & Hyderabad Geological Survey.
- In 1951, within Federal Financial Integration, the Hyderabad Geological Survey was merged with Geological Survey of India.
- Later the functions of granting of mineral concessions were transferred to Revenue Department. The Department of Mines & Geology was looking after the technical aspects and advising Govt. on desirability to grant mineral concessions.
- In 1961, 1964 & 1967, State Govt. established (3) Regional Offices under the charge of Assistant Director of Mines and Geology to look after the mineral activity in the State.
- Introduction of permit system in the year 1975 made it obligatory on the part of mine owners to pay royalty in advance and obtain permits from respective Assistant Director of Mines and Geology before transporting minerals from the leased areas.
- In 1976-77, Govt. sanctioned a scheme of re-organization of the Department wherein mineral regulatory work in respect of both major & minor minerals hitherto under the control of the Revenue Dept. was transferred to the Department of Mines & Geology.
- In 1976-77, to administer mineral regulatory activity in the State, Govt. established (12) offices of Assistant Director of Mines and Geology offices and (4) offices of Regional Deputy Director of Mines and Geology offices.
- After Reorganization of the state, the promotional, regulatory and mineral revenue collection on mines & minerals in the Telangana State is performed by:
 - Directorate of Mines & Geology at Hyderabad.
 - (3) Regional offices headed by Dy Directors of Mines & Geology.
 - (32) District offices headed by Asst. Directors of Mines & Geology.

TELANGANA MINERAL RESOURCES & INITIATIVES



DEPARTMENT OF MINES & GEOLOGY Government of Telangana

8th Floor, 'D' Block, BRKR Bhavan, Secretariat Road,
Hyderabad-500063

Tele: 040-23221750 / 66, Fax: 040-23221765

Email: directorminests@gmail.com

DEPARTMENT OF MINES & GEOLOGY GOVERNMENT OF TELANGANA

- Telangana State comprises of 33 Districts with varied geology having rich & wide variety of minerals suitable for mineral industries. The State is a house for various minerals specifically Coal, Uranium, Limestone, Iron Ore, Manganese Ore, Stoving Sand, Dolomite, Quartz, Feldspar, Laterite, Clays, Yellow Ochre, Barytes, Black & Colour Granites, Marble, Limestone Slabs, Fullers Earth, Road Metal/Building Stone/Ballast, Gravel/Ordinary Earth and Ordinary Sand.
- Serving as a guiding force to translate the State's mineral potential into reality with an objective of eco-friendly and sustainable mining.
- Focus is on augmenting mineral resources through exploration, Policy & Legislation in tune with the National Mineral Policy, 2019 in accelerating the growth in the liberal regime with overall development of the Mining Sector.

MINERAL RESOURCES AND STATUS

- **COAL:** Telangana is the only State in the entire Southern India consisting vast deposits of Coal with estimated reserves of 22054 million tons (up to a depth of 1200M). The coal being mined by M/s Singareni Collieries Company Ltd. a State Public Sector Unit with an average annual production is 64 Million Tonnes.
- **IRON ORE:** GSI after reassessment identified low grade Iron Ore deposits (Hematite/Magnetite) in Adilabad, Warangal, Mahabubabad, Karimnagar, Khammam, Mancheri and Jagtial Districts and total low grade Iron Ore resources is around 162 Million Tonnes. The utility for steel industry require beneficiation for enrichment. The Iron Ore resources being proposed for reservation to M/s Telangana State Mineral Development Corporation Ltd., State PSU for G2/G1 stage of exploration for establishment of proposed Integrated Steel Plant in Khammam District.

- **URANIUM:** Estimated reserve of 18550 Metric Tons in Lambapur, Pulicherla, Namapuram and Yellapuram Villages of Nalgonda District. M/s Uranium Corporation of India Ltd. (UCIL) filed Application for grant of Mining Lease over an extent of 542 Ha. MoEF, GoI granted EC for this project and UCIL is acquiring the lands for the said project.
- **LIMESTONE:** The State is endowed with extensive Limestone deposits in Adilabad, Peddapally, Mahabubnagar, Nalgonda, Suryapet, Vikarabad, Mancherla Districts with total resources around 7519 Million Tonnes. Limestone is being consumed in the manufacture of cement in 21 cement plants established in the State (10 Major & 11 Minor plants) with an installed capacity of 29.50 MTPA.
- **MANGANESE ORE:** Deposits found in Jamdapur, Guda, Kotkuri, Pipalkoti, Pipalgaon, Gunjala etc of Adilabad Dist with a total estimated reserves of 1.85 Million tonnes with 25%-40% Mn content. Minor occurrences found in Ratampet and Kandali of Nizamabad District. Chiefly used in the manufacture of ferroalloys, dry cells, purifying agent, coloring glasses, paints, oil and varnish industry. Freehold Manganese Ore areas proposed for reservation to TSMDC Ltd., a State PSU for G2/G1 level exploration.
- **GRANITE:** International fame granite varieties viz., 'Tan Brown' is available in Karimnagar & Peddapally Districts and 'Indian Aurora' in Kamareddy District. Other granite varieties available in the districts of Karimnagar, Peddapally, Rajanna-Sircilla, Jagityal, Warangal Urban, Warangal Rural, Mahabubabad, Jangaon, Khammam, Kamareddy, Siddipet, Medak, Sangareddy, Rangareddy, Medchal-Malkajgiri, Nalgonda, Yadadri-Bhuvanagiri, Suryapet, Mahabubnagar, Wanaparthy and Nagarkurnool Districts.
- **LIMESTONE SLABS:** The Tandur Blue Limestone Slab (Shahbad Stone) useful for flooring is famous in entire South India is available in Vikarabad District. Phyllites available in Damarcherla, Raghunathapalem of Nalgonda & Suryapet Districts are also useful for flooring purpose.

FUNCTIONS/ACTIVITIES

- The Department of Mines and Geology is entrusted with both promotional and regulatory functions for overall development of Mineral Sector and collection of mineral revenue to the State Exchequer.
- Department of Mines & Geology oversee the functions of receipt & processing of Mineral Concession applications, grant of leases for Minor Minerals, approval of Mine Plans, Inspection of Mines, Vigilance-curbing of illicit Mining and Transportation, monitoring of Mineral Production, Survey & Demarcation of areas through DGPS/ETS survey, Mineral Revenue Collection under Regulatory Functions. Mineral Investigations & exploration for tapping of new mineral deposits and evaluation of existing deposits under Promotional aspect.
- There are (32) Assistant Directors of Mines & Geology offices in each district (except in Hyderabad District). (3) Regional Deputy Directors of Mines & Geology offices at Nizamabad, Warangal and Hyderabad.

LEASES & MINING

- The details of Prospecting licenses, Mining Leases for Major Minerals, Quarry leases for minor minerals in the state and their extent as on 31.03.2019 as detailed below:

License/Lease	No. of leases	Extent in Ha.
Prospecting licenses	11	622
Mining Leases	139	113183
Quarry Leases		
(31) Minerals	446	3492
Granite & Marble	1065	2835
Other Minor Minerals	1200	2690
Total	2861	122822

- Mining for Coal, Limestone falls under large scale mechanized sector; while Granite, Dolomite, Quartz, Feldspar, Clays and Barytes etc fall under semi-mechanized medium sector and the other minerals fall under semi-mechanized small sector. Nearly 90% of the Mines fall under small sector and remaining 10% under medium and large sectors.

FOCUS MINERALS & INDUSTRIES

- Both Public & Private Sectors established large and medium scale mineral based industries for manufacture of Cement, Steel, Sponge Iron, Ferro-alloys, Glass, Ceramics, Refractories, Chemicals, Granite, Marble & Limestone cutting & polishing units, Slate cutting units, Gem cutting & faceting units, Granite monuments manufacturing units, Pulverizing units, Manufactured sand/crushed sand units, stone crushing units, Mosaic & Ceramic tile units, Lime Kilns in Telangana State.
- State identified mining sector as one of the growth engines and certain minerals have been identified as focus minerals viz., Coal, Iron Ore, Diamond, Dolomite, Uranium, Limestone for establishment of Cement, Thermal Plants, Granite Cutting & Faceting, Steel & Sponge Iron for overall growth and development of the Mining Sector.



LIME STONE



MANGANESE ORE



IRON ORE

MINERAL BASED INDUSTRIES IN TELANGANA STATE

SNo	Mineral Based Industries	No. of Industries
1	Cement Plants	21
2	Sponge Iron Plants	15
3	Quartz Pulverizing Units	79
4	Ferro alloys units	2
5	Granite cutting & Polishing units	723
6	Stone Crushing units	463
7	Napa Slab Units	183
8	Manufacture sand units	74
9	Ready Mix Concrete Units	125
10	Thermal Power Plants	3
11	Clay & Ceramic Units	29
12	Fullers earth processing units	55
13	Mosaic Chips Units	16
14	Brick Klins	234
15	Laterite Beneficiation Plants	2
16	Barytes Processing units	1
	Total	2025



DISTRIBUTION OF MINERALS & SCOPE FOR ESTABLISHMENT OF MINERAL BASED INDUSTRIES

SNo	District	Major Mineral	Minor Mineral	Scope for Mineral Based Industries
1.	Adilabad	Manganese Ore.	Laterite, Road Metal, Gravel, Morrum, Ord.Earth.	Cement and ferro-alloys industries, stone crushing units etc.
2.	Bhadradi-Kothagudem	Garnet, Stowing Sand, Coal.	Marble, Calcite, Laterite, Quartz, Feldspar, Road Metal, Gravel, Morrum, Ordinary Earth, Sand.	Sponge-Iron Units, coal based thermal power plants, Coal washeries, stone crushing units, pulverizing units etc.
3.	Jagityal	Iron Ore, Manganese, Limestone.	Quartz, Granite, Road Metal, Gravel, Morrum, Ordinary Earth.	Granite cutting & polishing units, stone crushing units.
4.	Jangaon	-	Granite, Road Metal, Gravel, Morrum, Ord.Earth.	Granite cutting & polishing units, stone crushing units.
5.	Jayashankar-Bhupalapalli	Coal, Stowing Sand.	Dolomite, Laterite, Granite, Road Metal, Gravel, Morrum, Ordinary Earth, Sand.	Power plants based on Coal, coal washeries, fly ash units, stone crushing units.
6.	Mulugu	Iron Ore	Laterite, Dolomite, Road Metal, Gravel, Morrum, Ordinary Earth, Sand.	Stone crushing units, chemical industries.
7.	Jogulamba-Gadwal	Limestone.	Quartz, Feldspar, Granite, Road Metal, Gravel, Morrum, Ordinary Earth, Sand.	Stone crushing units, pulverizing units, granite cutting & polishing units etc.
8.	Kamareddy	-	Quartz, Feldspar, Laterite, Road Metal, Gravel, Morrum, Ordinary Earth, Sand.	Granite cutting & polishing units, stone crushing units, pulverizing units.

9.	Karimnagar	-	Granite, Road Metal, Gravel, Morrur, Ord.Earth, Sand.	Granite cutting & polishing units, stone crushing units.
10.	Khammam	Iron Ore, Coal.	Mica, Dolomite, Corundum, Barytes, Quartz, Granite, Road Metal, Gravel, Morrur, Ordinary Earth.	Power plants based on Coal, coal washeries, fly ash units, granite cutting & polishing units, stone crushing units etc.
11.	Komaram Bheem	Limestone, Coal.	White Clay, Sandstone, Road Metal, Gravel, Morrur, Ordinary Earth.	Power plants based on Coal, coal washeries, fly ash units, Ceramic industry, stone crushing units etc.
12.	Mahabubabad	Iron Ore.	Barytes, Kaolin, Granite, Road Metal, Gravel, Morrur, Ordinary Earth.	Granite cutting & polishing units, stone crushing units etc.
13.	Mahabubnagar	*Gold, *Diamond.	Quartz, Feldspar, Granite, Road Metal, Gravel, Morrur, Ordinary Earth.	Manufacture Sand units, Stone crushing units, granite cutting & polishing units, glass industry etc.
14.	Narayanpet		Quartz, Feldspar, Road Metal, Gravel, Morrur, Ordinary Earth.	Pulverizing units, Glass industry, Stone crushing units etc.
15.	Mancherial	Limestone, Coal, Stowing Sand.	Dolomite, Granite, Road Metal, Gravel, Ord.Earth, Sand.	Power plants based on Coal, coal washeries, cement plants, fly ash units, Ceramic industry, stone crushing units etc.
16.	Medak	-	Quartz, Feldspar, Road Metal, Gravel, Morrur, Ordinary Earth.	Manufacture Sand units, Glass industries, pulverizing units, glass industry, Stone crushing units etc.
17.	Medchal -Malkajiri	-	Quartz, Feldspar, Road Metal, Gravel, Morrur, Ordinary Earth.	Manufacture Sand units, Glass industries, pulverizing units, glass industry, Stone crushing units etc.

18.	Nagarkurnool	-	Quartz, Feldspar, Road Metal, Gravel, Morrum, Ordinary Earth.	Manufacture Sand units, Glass industries, pulverizing units, glass industry, Stone crushing units etc.
19.	Nalgonda	Limestone, *Gold, *Diamond.	Quartz, Feldspar, Granite, Road Metal, Gravel, Morrum, Ordinary Earth.	Cement plants, Manufacture Sand units, Glass industries, pulverizing units, glass industry, Stone crushing units etc.
20.	Nirmal	-	Quartz, Road Metal, Gravel, Morrum, Ordinary Earth.	Stone crushing units etc.
21.	Nizamabad	-	Granite, Feldspar, Quartz, Road Metal, Gravel, Morrum, Ordinary Earth, Sand.	Granite cutting & polishing units, pulverizing units, stone crushing units etc.
22.	Peddapalli	Limestone, Iron Ore, Coal, Stowing Sand.	Granite, Road Metal, Gravel, Morrum, Ordinary Earth, Sand.	Power plants based on Coal, coal washeries, cement plants, fly ash units, Ceramic industry, stone crushing units etc.
23.	Rajanna-Sircilla	-	Granite, Road Metal, Gravel, Morrum, Ordinary Earth, Sand.	Granite cutting & polishing units, stone crushing units etc.
24.	RangaReddy	-	Quartz, Feldspar, Granite, Road Metal, Gravel, Morrum, Ordinary Earth.	Ceramic industry, Granite cutting & polishing units, Manufactured sand units, stone crushing units, pulverizing units etc.
25.	SangaReddy	-	Quartz, Laterite, Road Metal, Gravel, Morrum, Ordinary Earth.	Ceramic industry, Granite cutting & polishing units, Manufactured sand units, stone crushing units, pulverizing units etc.

26. Siddipet	-	Granite, Road Metal, Gravel, Morrum, Ord. Earth.	Granite cutting & polishing units, Manufactured sand units, stone crushing units etc.
27. Suryapet	Limestone, *Gold, *Diamond.	Laterite, Quartz, Feldspar, Road Metal, Gravel, Morrum, Ordinary Earth.	Cement plants, Limestone cutting & polishing units, Stone crushing units etc.
28. Vikarabad	Limestone.	Laterite, Quartz, Feldspar, Fullers Earth, Limestone Slabs, Road Metal, Gravel, Ord.Earth.	Cement plants, Limestone cutting & polishing units, Quartz/Feldspar/Fullers Earth Pulverizing units etc.
29. Wanaparthy	Limestone.	Quartz, Feldspar, Granite, Road Metal, Gravel, Morrum, Ordinary Earth.	Quartz & Feldspar pulverizing units, manufactured sand units, stone crushing units etc.
30. Warangal (R)	-	Laterite, Granite, Road Metal, Gravel, Ord.Earth.	Granite cutting & polishing units, manufactured sand units stone crushing units etc.
31. Warangal (U)	-	Quartz, Granite, Road Metal, Gravel, Ord.Earth.	Granite cutting & polishing units, manufactured sand units stone crushing units etc.
32. Yadadri-Bhuvanagiri	-	Quartz, Feldspar, Granite, Road Metal, Gravel, Morrum, Ordinary Earth.	Granite cutting & polishing units, manufactured sand units stone crushing units etc.



PHYSICAL AND FINANCIAL TARGETS & ACHIEVEMENTS

MINERAL REVENUE

The Mineral & Mining Sector in the State contributed 4848.85 Crores in 2017-18 against the target of Rs. 4060.03 Crores with a growth rate 31%.

MINERAL REVENUE ACHIEVEMENTS

Year	Achievement	Growth
2004-05	846.53	-
2005-06	1075.30	27
2006-07	780.20	-27
2007-08	928.72	19
2008-09	1041.09	12
2009-10	1101.88	6
2010-11	1285.86	17
2011-12	1400.98	9
2012-13	1780.87	27
2013-14	1807.00	1
Grand Total	12048.43	

Year	Achievement	Growth
2014-15	1968.26	9
2015-16	2369.71	20
2016-17	3169.69	34
2017-18	3704.38	17
2018-19	4848.85	31
Grand Total	16060.89	



**COMPARATIVE MINERAL REVENUE COLLECTIONS IN
2017-18 & 2018-19**

SNo	State	2017-18	2018-19	% of growth over 2017-18
1	Andhra Pradesh	2110	2464	17
2	Chhattisgarh	4870	6000	25
3	Gujarat	1200	1550	29
4	Jharkhand	5600	5974	7
5	Karnataka	1847	2065	12
6	Madhya Pradesh	4200	4622	10
7	* Odisha	5800	10294	77
8	Rajasthan	4450	5870	32
9	Tamilnadu	1085	1000	-8
10	Telangana	3704	4849	31

* Steep increase in Mineral Revenue in Odisha is due to boost in Iron Ore despatches on account of stoppage of Iron Ore mining in Goa by the Hon'ble Supreme Court.

**DISTRICT-WISE MINERAL REVENUE COLLECTIONS
FROM 2010-11 TO 2015-16**

S. No	District	2014-15	2015-16	2016-17 (upto Sep 2016)
1	Mahaboobnagar	2338.92	3535.43	2795.96
2	Ranga Reddy	10229.34	11871.98	6334.63
3	Medak	2677.91	4932.94	3511.64
4	Nizamabad	1475.55	2651.23	1519.37
5	Adilabad	4912.43	6342.02	3397.47
6	Karimnagar	17233.49	14942.35	9287.76
7	Warangal	5240.19	5995.89	2931.03
8	Khammam	4062.52	5374.27	4117.05
9	Nalgonda	14316.46	16048.08	10917.98
	Sub TOTAL	62486.81	71694.19	44812.89
	COAL*	133455.72	124341.90	0.00
	Sand	0.00	2332.42	0.00
	Sand sales	0.00	37685.76	0.00
	Cess on Others	884.08	917.13	458.93
	TOTAL	196826.61	236971.40	45271.82

**DISTRICT-WISE, MINERAL REVENUE COLLECTION
DURING 2016-2017 TO 2018-2019**

(Rs. in Lakhs)

SNo	District	Mineral Revenue Achievements		
		2016-17 (Oct 2018-Mar 2017)	2017-18	2018-19
1	Adilabad	640.95	1357.51	1713.42
2	Kumram Bheem Asifabad	255.67	692.03	703.39
3	Nirmal	375.11	696.74	1045.58
4	Mancherial	2969.10	4989.52	4680.50
5	Nizamabad	1279.29	2112.46	2762.63
6	Kama Reddy	614.41	1019.30	1553.30
7	Medak	906.56	1212.65	1769.04
8	Sanga Reddy	2240.71	3573.45	4314.06
9	Siddipet	1390.75	2487.89	23065.42
10	Mahabubnagar	1196.16	5407.39	9011.86
11	Wanaparthy	773.96	582.14	491.12
12	Jogulamba-Gadwal	313.82	491.98	427.92
13	Nagarkurnool	1220.26	5116.90	11858.37
14	Vikarabad	3678.85	7118.51	8607.80
15	Rangareddy	2708.10	10225.45	6894.67
16	Medchal-Malkajgiri	1044.24	2878.28	3899.14
17	Yadadri-Bhongir	1614.99	2348.64	2564.48
18	Nalgonda	2928.31	6965.59	7593.85
19	Suryapet	6208.30	13665.72	13897.35
20	Janagaon	372.87	998.53	1301.82
21	Warangal(R)	489.46	864.18	1316.68
22	Warangal(U)	1458.86	2929.60	3566.05
23	Mahabubabad	1230.52	1736.50	1731.82
24	Jayashankar	1225.71	2106.55	6113.94
25	Karimnagar	9717.04	15393.60	17229.20
26	Jagityal	987.87	1304.71	1482.14
27	Peddapally	1393.22	2564.04	4497.83
28	Rajanna-Sircilla	1137.77	2113.23	3343.67
29	Khammam	3161.98	5110.15	6254.78
30	Badradri Kothagudem	1235.43	1658.35	2034.06
	Sub TOTAL	54770.22	109721.59	155725.89
	COAL	170180.05	200000.00	240000.00
	Cess on Others	545.71	1038.16	516.23
	TOTAL	225495.99	59678.46	88642.73
		* 270767.81	370438.21	484884.85

Total Mineral Revenue Collections for 2016-17 (Prior to and After Re-organization of Districts in the State)

MINERAL PRODUCTION & VALUE

- The Mineral consumption is increasing due to promotion of various industries and manufacture of Mineral based products. State produces about 37 million tons of industrial minerals, 67.68 million tons of coal and 206 million cubic meters of dimensional stones and building material.

MINERAL PRODUCTION AND VALUE OF MINERAL PRODUCED FOR THE YEAR 2018-19

Sl.No	Mineral	Unit	2017-2018		2018-2019	
			Production	Value (Rs in'000)	Production	Value (Rs In'000)
Major Minerals						
1	Coal	Tonnes	64642436	135001204	67686841	157710340
2	Garnet	Tonnes	0	0	240	1960
3	Graphite	Tonnes	0	0	0	0
4	Iron Ore	Tonnes	6000	4194	1500	1034
5	Lime Stone	Tonnes	25925669	10318416	29049098	10312430
6	Manganese Ore	Tonnes	20706	74231	11334	44758
7	Stowing Sand	Tonnes	621486	71365	2291149	288685
Total			145469410		168359207	
Minor Minerals						
(A) Industrial						
1	Amethyst	Tonnes	0	0	0	0
2	Barytes	Tonnes	3700	15263	1020	4628
3	Dolomite	Tonnes	480600	240300	653025	359164
4	Feldspar	Tonnes	798964	314792	922611	401336
5	Fire Clay	Tonnes	0	0	0	0
6	Latarite	Tonnes	3014974	814043	3837982	1228154
7	Mica	Tonnes	0	0	0	0
8	Quartz	Tonnes	593226	204663	731952	278142
9	Silica Sand	Tonnes	0	0	0	0.00
10	Shale	Tonnes	40805	6121	53522	8831
11	White Clay	Tonnes	57465	14366	5009	13752
12	Yellow Ochre	Tonnes	0	0	0	0
Total			1609548		2294007	
(B) Other Minor						
1	Black Granite	M3	401717	7230907	412681	8171086
2	Colour Granite	M3	794182	16677830	697062	16102121
3	Gravel / Earth	M3	52875474	20092680	95389092	39872640
4	Fuller's Earth	Tonnes	780243	808082	547096	623689
5	Lime Stone Slabs	M2	3806327	989645	3674418	1050884
6	Limekankar	Tonnes	0	0	0	0
7	Mosaic Chips	Tonnes	12250	9304	30713	25645
8	Marble	Tonnes	0	0	0	0
9	Road Metal	M3	57472567	54598939	99073560	103531870
10	Ordinary Sand	M3	9535278	5721167	10754055	6452433
Total			106128554		175830369	
Grand Total			253207512		346483583	

INVESTIGATION AND EXPLORATION

A. IRON ORE:

- As per Section 93 of AP Reorganization Act, 2014 read with Thirteenth Schedule, the Central Govt. under infrastructure development shall examine the feasibility of establishing an Integrated Steel Plant in Khammam, Telangana State.
- In order to have Iron Ore deposits source for the proposed ISP, the State Govt. proposed for reservation of all the Iron Ore blocks to TSMDC for sustainable supply to the ISP to be established by SAIL.
- The Dept. and GSI taken-up collaborative investigation under "Re-assessment of Iron Ore deposits in and around Bayyaram area and Khammam and Warangal Districts" by entering into an MoU.
- GSI carried-out Iron Ore investigation in Bayyaram area (G3) level in FSP 2015-16 and in 11 Blocks (G4) level as 5 items in the FSP 2016-17.
- The State Govt. decided to reserve Iron Ore bearing areas to M/s TSMDC Ltd. Therefore, further upgraded exploration shall be taken-up by TSMDC Ltd.

IRON ORE RESOURCES POSITION IN TELANGANA STATE

GSI Item No.	Block Name	Reserves in Million Tonnes	Grade (% of Fe)
84/2015	Bayyaram, Mahabubabad Dist.	70.53	25 to 60
100	Yerraballi, Warangal (U) Dist.	13.30	39 to 43
101	Gurimella-Yerragunta		
	(i) Yetagunta sub-block	3.03	21 to 48
	(ii) Kamballapalle sub-block	1.48	25 to 40
	(iii) Nalla Gutta sub-block	0.92	25 to 40
	Total (101)	5.43	
103	Sitanagaram Macherla, Mahabubabad Dist. Lachapuram, Kothagudem Dist.	2.31	20 to 40
104	Rebbanapalli, Mancherla Dist. Chandoli-Ambaripet, Jagityal Dist.	39.50 30.99	27 to 32
	Total (104)	70.49	
	GRAND TOTAL	162.062	

B. LIMESTONE:

- The Dept. on priority proposed exploration for allotment of (3) gap area Limestone blocks viz. (1) Pasupulabodu RF Block (2) Saidulnama RF Block and (3) Sultanpur RF Block in Suryapet District of Telangana.
- The GSI & MECL completed G3 level exploration work in all (3) blocks and the State Govt. sought relaxation under Rule (8) of M(EMC) Rules, 2015 for allotment as mining lease through auction from the Central Govt. with due justification. However, the Central Govt. clarified to take-up G2 level exploration or to go for a Composite License.
- Owing to location of blocks in the Reserve Forest no scope to conduct drilling as per M(EMC) Rules, 2015. Therefore, State Govt. sought relaxation by MoM, GoI for allotment of the blocks as Composite License and awaiting Permission.
- As part of preparation, the Dept. already entered into MoU with SBI Capitals Ltd. to act as Transaction Advisor and MSTC for making available the e-auction platform.
- In addition, the Ministry of Mines, Govt. of India in May, 2018 accorded permission for G4-G3-G2 exploration in 15 Limestone blocks in Telangana State at an estimated cost of Rs 29.58 Crores through NMET.
- The State Govt. allotted 15 Limestone blocks in 8 clusters for exploration to TSMDC Ltd. being empanelled by the MoM, GoI under Section 4(1) of MMDR Act, 1957.
- The Dept. is in the process of identification and demarcation of more blocks in future and approach TCC, NMET for exploration through NMET.



C. OTHER MINERAL EXPLORATION:

Gold & REE, Precious and Base Metals:

- G4 projects for investigation of primary source of Diamond in Mahabubnagar, Gadwal, Wanaparthy, Nagarkurnool Districts.
- Reconnoitary survey for Diamondiferous Kimberlite pipes in Suryapet District by NMDC.
- GSI proposed G4 level exploration in Gadwal Schist Belt for Gold, REE, Tin & Tungsten in Atkur area of Jogulamba-Gadwal and Wanaparthy Districts and another one in Dharur-Dornala Block in Jogulamba-Gadwal District under FSP 2019-2020.
- MECL to carry-out G4 exploration for Base Metal in Vutkur Block and Atmakur Block of Gadwal Schist Belt in Jogulamba-Gadwal District.
- State Govt. is proposing reservation of areas to NMDC for exploration of Gold & Diamond in Telangana State.
- Regional survey for Phosphate, Apatite, Potash, Pyrite, Glauconite & Associated minerals over an extent of 1357.08 Sq.KM in Warangal Urban District.



POLICY INITIATIVES

- Considering recession in the domestic & international market and with an overall view to encourage Granite Industry in the State, Telangana Government, announced concession in levy of seigniorage fee with respect to Granite cutting & polishing units and Limestone slabs polishing units in the State upto September 2019.
- In the light of National Mineral Policy 2019 announced by the Ministry of Mines, Govt. of India, the 'Telangana State Mineral Policy' is under consideration with the State Govt. and will be announced shortly.
- Govt. introduced the New Sand Mining Policy-2014 for the State of Telangana for proper regulation of sand activity in the State by entrusting sand extraction to Telangana State Mineral Development corporation (TSMDC) and to avoid over exploitation and conduct of operations through systematic extraction with due protection to environment and disposal through establishment of stockyards at price fixed by the Govt. and to curtail the middle man.
- Other States viz., Punjab, Haryana, Madhya Pradesh, Maharashtra, Tamil Nadu, Karnataka etc visited Telangana State to study the unique Sand Policy and to implement in their respective States.
- Ministry of Mines, Govt. of India formulated 'Sand Mining Framework' by taking into consideration the Sand Policy of Telangana State for overall implementation throughout the country.
- A unique model of 'Sand Taxi' system is framed and implemented in Telangana State facilitating booking of sand through online process and supply to the customer door step in the nook and corner of the Districts.



IMPLEMENTATION OF INFORMATION TECHNOLOGY

- State Government introduced 'Online Mineral e-payment & e-permit System' facilitating payment of statutory amounts, filing, processing, issue of dispatch permits & generation of transit forms (way bills) by leaseholders through user friendly online service totally avoiding manual interface.
- Implementing 'Online Receipt, Processing & Disposal of Mineral Concession Applications for Minor Minerals' through Dept. web portal.
- Under the process of implementation of 'Online Monitoring of Mineral Dealer's Transit Passes' for transportation of processed/finished mineral.
- Under the process of implementation of 'Online Temporary Permits Monitoring System' for immediate requirement of minor minerals.
- Implementing 'e-Office' in the Directorate for processing & disposal of files creating paperless office. Phase-wise implementation of e-office at Regional/ District level by the end of 2019.



PROSPECTING LICENSES (AS ON 31.03.2019)

S No	Mineral	No. of Leases			Extent in Hectares			
		Working	Non-Working	Total	Govt. Land	Patta Land	Forest Land	Total
1	Quartz & Feldspar	4	2	6	83.15	0.00	0.00	83.15
2	Limestone	0	3	3	290.28	229.75	0.00	520.03
3	Laterite	2	0	2	19.24	0.00	0.00	19.24
Total		6	5	11	392.67	229.75	0.00	622.42
Grand Total		2114	747	2861	102753.32	9159.01	10899.72	122812.06

MINING LEASES (AS ON 31.03.2019)

S No	Mineral	No. of Leases			Extent in Hectares			
		Working	Non-Working	Total	Govt. Land	Patta Land	Forest Land	Total

Major Minerals:

1	Iron	0	4	4	16.00	18.16	24.00	58.16
2	Limestone	31	24	55	6982.84	2479.49	824.51	10286.84
3	Manganese	5	10	15	93.13	614.25	0.00	707.38
4	Coal	50	1	51	80780.58	3750.58	9741.10	94272.26
5	Coal & Stowing Sand	1	0	1	6571.60	0.00	276.40	6848.00
6	Stowing Sand	3	6	9	989.82	0.00	0.00	989.82
7	Garnet	0	4	4	0.00	20.45	0.00	20.45
Total		90	49	139	95433.98	6882.94	10866.01	113182.93

SINGARENI COAL MINE



QUARRY LEASES (AS ON 31.03.2019)

S No	Mineral	No. of Leases			Extent in Hectares			
		Working	Non-Working	Total	Govt. Land	Patta Land	Forest Land	Total

Minor Minerals (Industrial Minerals) (31 Minerals):

1	Amethyst	0	1	1	0.89	0.00	0.00	0.89
2	Amethyst Quartz	0	1	1	16.19	0.00	0.00	16.19
3	Barytes	2	8	10	293.57	3.41	19.20	316.18
4	Clay	1	2	3	9.63	0.00	0.00	9.36
5	Corrundum	1	1	2	1.50	1.50	0.00	3.00
6	Dolomite	10	4	14	430.30	46.52	0.00	476.82
7	Feldspar	3	0	3	47.95	8.10	0.00	56.05
8	Laterite	138	19	157	623.19	544.35	4.80	1172.34
9	Laterite & Iron ore	3	1	4	51.40	17.05	0.00	68.45
10	Mica	0	1	1	21.85	0.00	0.00	21.85
11	Quartz	28	19	47	224.35	32.96	4.80	262.11
12	Quartz & Quartzite	2	1	3	28.06	3.57	0.00	31.63
13	Quartz & Feldspar	119	54	173	449.99	68.62	0.00	518.62
14	Shale	3	0	3	222.14	60.04	0.00	282.18
15	Barytes & Dolomite	0	2	2	41.29	27.80	0.00	69.09
16	White Clay	5	16	21	155.32	30.06	0.00	185.39
17	Steatite	1	0	1	1.28	0.00	0.00	1.28
	TOTAL	316	130	446	2618.96	844.00	28.80	3491.76

Existing Minor Minerals

1	Black Granite	344	208	552	599.66	409.78	4.91	1014.35
2	Colour Granite	375	136	511	1530.71	282.34	0.00	1813.05
3	Stone & Metal	796	167	963	2074.53	357.58	0.00	2432.11
4	Gravel	6	7	13	33.11	2.21	0.00	35.33
5	Stone Metal & Gravel	7	9	16	18.90	24.66	0.00	43.56
6	Limestone Slabs	105	18	123	34.45	67.59	0.00	102.05
7	Mosaic Chips	5	5	10	15.82	1.00	0.00	16.82
8	Fullers Earth	64	11	75	2.97	57.14	0.00	60.11
9	Marble	0	2	2	8.06	0.00	0.00	8.06
	Total	1702	563	2265	4318.24	1202.31	4.91	5525.47

GRANITE VARIETIES OF TELANGANA

TRADE NAME	LOCATION	DISTRICT
Brown Porphyry	Kalawala	Karimnagar
Red Rose	Mulangoor, Huzurabad	Karimnagar
Black	Choutapalli, Somaram, Tharalapally, Menkatayapalem, Nellakondapalli, Pamimi	Warangal Khammam
Blue Brown	Kalawala	Karimnagar
Saffire Brown	Khazipet	Warangal
Tan Brown	Odyaram	Karimnagar
Indian Aurora	Bheemgal	Nizamabad



GRANITE QUARRY



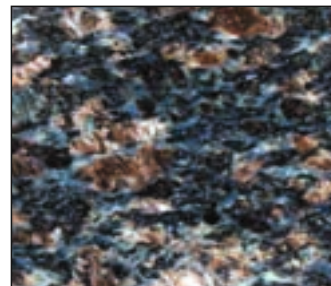
GRANITE BLOCKS



TAN BROWN



INDIAN ARORA



SAPHIRE BROWN



MAPLE RED



JET BLACK

HOTELS / PARKS / WATER BODIES IN ABANDONED QUARRY PITS

Abandoned Quarry Pits are created due to conduct of mining activity to extract minerals. Every country is facing the problem of abandoned quarry pits and there is an immediate need to advent plan to utilize these pits for the benefit of the mankind.

The process of the rehabilitation of abandoned quarries is a great opportunity to reshape the deformed land due to excavations, and this opportunity needs to be used by creating an edifice, a building or an activity that serves the local community and be of an economic, aesthetic and beneficial sustainable effect on the environment, and that is evident in the Eco-Tourism.

Initiatiatives in Rehabilitation of Abandoned Quarry Pits:

- Hotels, Restuarant, Commercial Apartments
- Amusement Parks, Water Games, Boating
- Motor Racing Tracks, Rock Climbing, Trekking
- Automated Car Parking System, Movie Shooting Spots
- Water Harvesting Tanks, Aqua Culture Ponds, Irrigation Tanks
- Drinking Water Sources, etc..

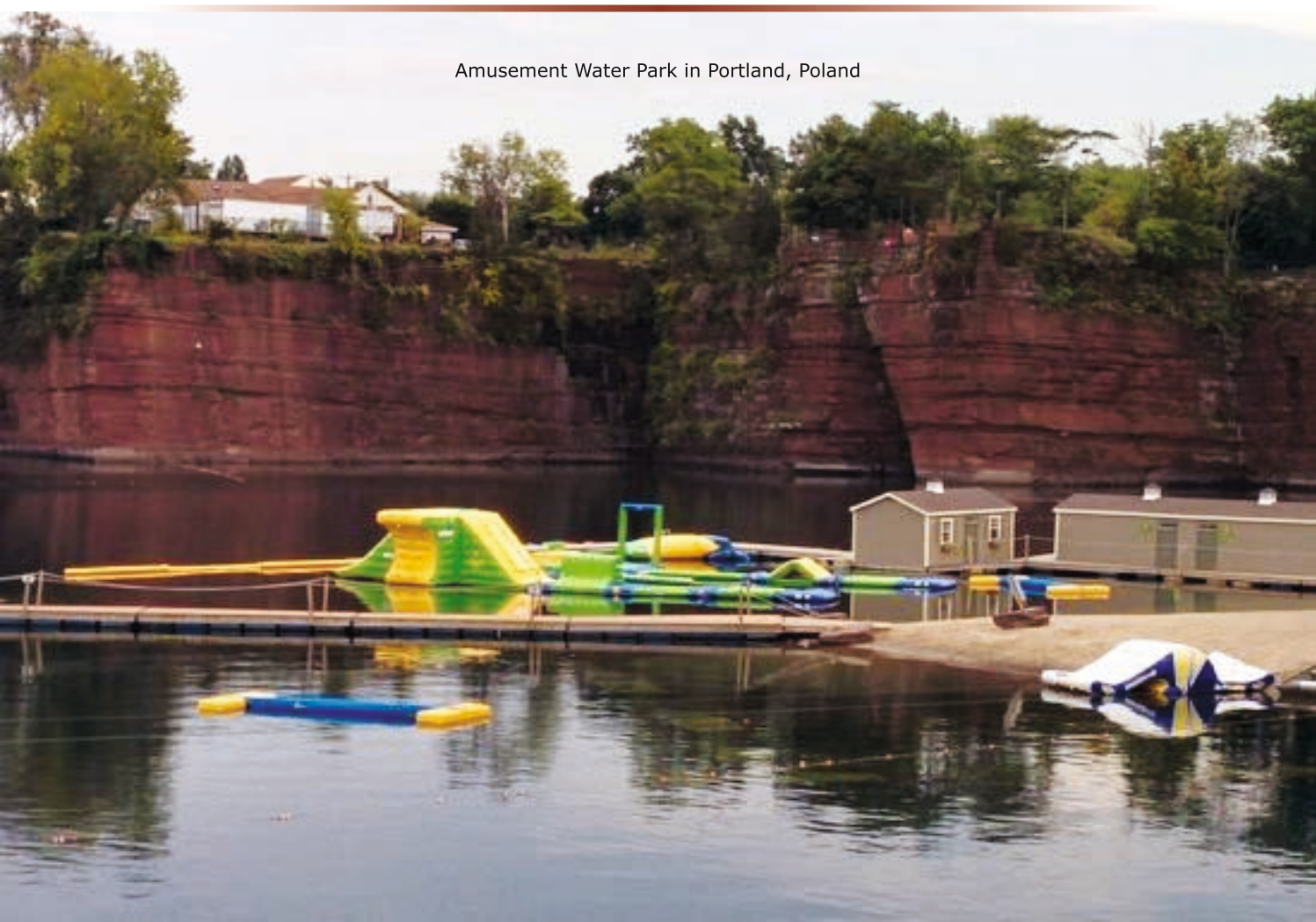
Hotel in Quarry Pit, Shanghai, China



In Shanghai, China the Shanghai Shimo Group planned a Five-star hotel with 336-room resort is built into a 289 feet deep pit on the outskirts of the city. The hotel consists of 16 storeys under the ground and the deepest two floors are underwater. Adventure sports facilities and a glass bridge are also on the drawing board. The hotel is set to have an underwater restaurant.



Amusement Park Developed in Quarry Pit, Romania



Amusement Water Park in Portland, Poland

DEVELOPMENT OF MINERAL RESOURCES & TECHNOLOGY UPGRADATION FUND

(A Government of Telangana Trust)

8th floor, BRKR Bhavan, Secretariat Road, Hyderabad-5000 063

Phone: 040-23221766. Fax:040-23221750.

- State Government with a need to have a mechanism for resource audit of mineral wealth in the State has formulated a body for exploration of minerals in a scientific manner.
- 1st State in the Country to create a fund 'Development of Mineral Resources & Technology Upgradation Fund (DMRTUF)' by allocation from Telangana Mineral Development Corporation Ltd.
- Resource Audit involves collection of geological & exploration data, dissemination of information etc.
- Evaluation & identification of gaps in information & formulate programmes for exploitation.
- Also involves survey of all available technologies and evaluation for optimizing mining.

B.R.V. Susheel Kumar, B.E. (Mining)

Director of Mines and Geology
& Member Secretary, DMRTUF.

Jayesh Rajan, IAS

Prl. Secretary to Govt. & CIP
(Ind. & Com). Dept & Chairman, DMRTUF.



MINING | COMMUNITY WELFARE | ENVIRONMENT



DEPARTMENT OF MINES & GEOLOGY

8th Floor, 'D' Block, BRKR Bhavan, Secretariat Road, HYDERABAD-500063

Phone: 040-23221766, Fax: 040-23221750

Email: directorminests@gmail.com

Website: www.mines.telangana.gov.in